



SHIMGE[®]
WATER · TECHNOLOGY

SHIMGE PUMP INDUSTRY GROUP CO.,LTD.

Add.: Dayangcheng Industrial Zone, Daxi Town, Wenling City, Zhejiang, China.

Tel.: +86-576-86339960 Fax: +86-576-86337079

E-mail: admin@shimge.com Http://www.shimge.com

P.C.: 317525

Technical Data Is Subject To Change Without Notice, The First Printing In October, 2012

SHIMGE[®]
WATER · TECHNOLOGY

Company Profile...

Founded in 1984, Shimge pump industry group co.,ltd. is a share-holding listed enterprise, specialized in manufacturing various types of pumps. With over 1500 employees, and more than 190,000 square meters workshops and advanced equipments and technology, Shimge company has the annual output 1.8 million units of pumps, such as peripheral, centrifugal, jet, deep well, submersible, drainage, sewage , circulation and multistage stainless steel pumps etc..

By the guidance of quality management principle, which includes infinitely satisfying customers' demand, pursuing top international quality and service level, uplifting the competitive capacity, Shimge has achieved rapid development, attracting the great attention both at home and abroad.

Being entitled to self-import and self-export rights, Shimge products also gain CCC certificate, GS certificate and CE certificate,RoHS etc.,and with the philosophy of best solutions to users both at home and abroad, Shimge has been successfully establishing a global sales net-work in more than 80 countries, like Africa, Eastern Europe, Western Europe, Middle East, Southeast Asia, North and South American countries etc..

With the best quality and first class service, the innovative Shimge people warmly welcome all customers and friends worldwide!

SHIMGE®



Leading Manufacturing Center



Perfect Quality Guarantee System



RoHS

ISO9001

ISO14001



CONTENTS

CIRCULATION PUMP

SUMMARY	01
BPS	01
APS/XPH	02
ZP(ZPS)/XPS	03
XP/CPH	04

SURFACE PUMP

SUMMARY	05
QB/SQ(m)/SGJW/JET	06
SGJS/WZB/AWZB/AWZB-H	07
CP(m)/SHFm/2SGP(m)	08
SGT	09

SUBMERSIBLE PUMP

SUMMARY	10
Q(D)(J)	10
WSD(T)/Q(D)X-H1	11
Q(D)X-K1/Q(D)X-L1	12
Q(D)X/Q(D)X-T	13

SEWAGE PUMP

SUMMARY	14
WQ(D)S/WQXD/WQS/QT	15
WVS(D)-(F)/WQ(D)AS	16
WQ(D)/WQ	17
WQ(D)-B/WQ(D)H1	18
WQ/WQ-multistage	19
WQK/DWE	20

DEEP WELL PUMP

SUMMARY	21
3SG(m)/3.5SGm1/3 /4SG(m) 2/3	22
4SG(m) 4/6/8/10	23
90QJDY/QJ(D)Y 2/4/6	24
QJ(D)Y 8/10	25
4SS(m) 2/3/5/8	26
6SS17/30/46/60	27
6SG18/30/45/60	28
QJD/NK(m)	29
4SK(m)/QG(D)	30

STAINLESS STEEL MULTI-STAGE PUMP

SUMMARY	31
BL(T)2/BL(T)4	32
BL(T)8/16/20	33
BL(T)32	34
BL(T)45/BL(T)64/BL(T)90	35
BW/BWJ(T)	36

SPARE PARTS

SPARE PARTS	37
-------------	----

Summary of Circulation Pumps

Product Introduction

P series high quality circulation pump applies interior scale prevention treatment, equipped with ceramic or silicon carbide bearing, offers the characteristics of stable operation, leakage free and super quietness.

Product range covers 6 series: XPS series adjustable speed high quality circulation pump, XP series unadjustable speed high quality circulation pump, ZP(S) series automatic pressurization high quality circulation pump, BPS series automatic exhaust high quality circulation pump, XPH series timing and constant temperature high quality circulation pump and APS series intelligent frequency converter circulation pump with energy efficiency classified as grade A.

The products are widely used in HVAC circulation, domestic pressurization, solar pressurization, industrial support, cold-hot water circulation, wall-mounted boiler, etc..

Product Structure

This product is composed of pump and single phase motor.

The pump is mainly composed of impeller and pump body. Motor is mainly composed of stator, rotor, screening can, and bearing etc.; Pump body material: Bronze, brass, cast iron or plastic.

The stator and rotor are canned by the stainless can, and the pump and motor are static sealed, leak free.

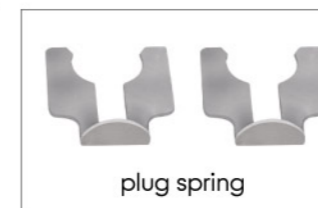
This product is applied internal recycle, and the bearings is lubricated by the liquid pumped which cools the motor.

Motor: Insulation class: F & H; Frequency: 110v~240v; Herz: 50hz / 60hz.

XP series motors are of fixed rotating speed while XPS series motors are of 3 speeds.

CIRCULATION PUMP

BPS



Technical Data

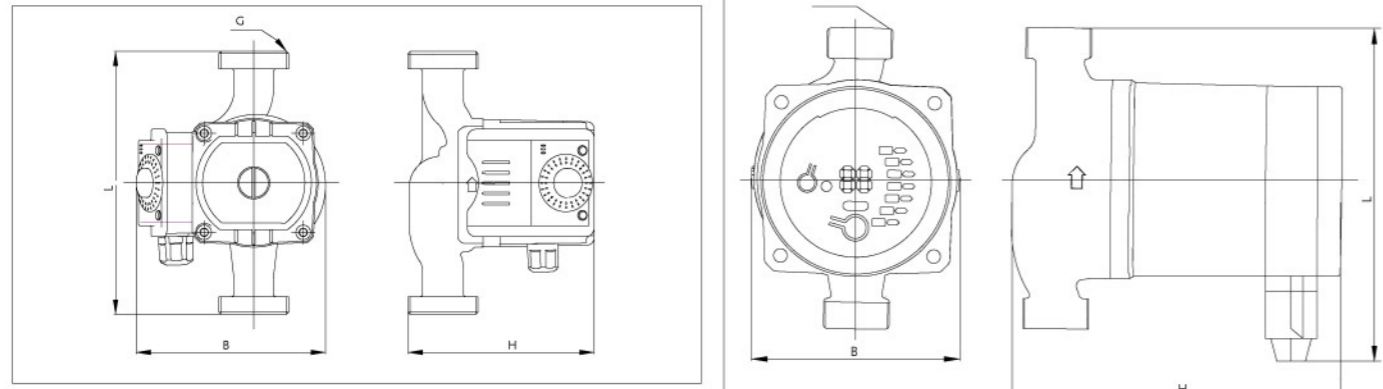
Model	Diameter of inlet and outlet (mm)	Max. Head (m)	Max. flow (m ³ /h)	Rated head (m)	Input power (w)	Rated power (w)	G	Dimension(mm) LXBXH	Weight(kg)		Volume (m ³)
									N.W.	G.W.	
BPS15-5A	15	5	2.8	3.2	95	35	-	135×115×124	2.1	2.2	0.002
BPS15-6A	15	6	2.8	4.2	105	40	-	135×115×124	2.2	2.3	0.002
BPS15-7A	15	7	2.8	5.2	130	55	-	135×115×124	2.3	2.4	0.002
BPS15-5B	15	5	2.8	3.2	95	35	3/4"	144×125×130	2.1	2.2	0.002
BPS15-6B	15	6	2.8	4.2	105	40	3/4"	144×125×130	2.2	2.3	0.002
BPS15-7B	15	7	2.8	5.2	130	55	3/4"	144×125×130	2.3	2.4	0.002
BPS15-5C	15	5	2.8	3.2	95	35	3/4"	135×115×124	2.1	2.2	0.002
BPS15-6C	15	6	2.8	4.2	105	40	3/4"	135×115×124	2.2	2.3	0.002

APS / XPH

CIRCULATION PUMP



Dimensions



Technical Data

Model	Diameter of inlet and outlet (mm)	Max. Head (m)	Rated flow (m³/h)	Rated head (m)	Input power (w)	Rated power (w)	G	Dimension(mm) LXBXH	Weight(kg)		Volume (m³)
									N.W.	G.W.	
APS15/20/25-4-130	15/20/25	4	1.25/1.25/1.5	2.5	45	-	3/4" / 1" / 1 1/2"	155x92x147	2.4	2.8	0.004
APS15/20/25-5-130	15/20/25	5	1.25/1.25/1.5	3.5	45	-	3/4" / 1" / 1 1/2"	155x92x147	2.5	3.0	0.004
APS15/20/25-6-130	15/20/25	6	1.25/1.25/1.5	4.5	45	-	3/4" / 1" / 1 1/2"	155x92x147	2.5	3.0	0.004
APS25/32-4-180	25/32	4	1.5/1.5	2.2	45	-	1 1/2"/2"	205x92x150	2.8	3.4	0.005
APS25/32-5-180	25/32	5	1.5/1.5	3.2	45	-	1 1/2"/2"	205x92x150	2.9	3.5	0.005
APS25/32-6-180	25/32	6	1.5/1.5	4.2	45	-	1 1/2"/2"	205x92x150	2.9	3.5	0.005
XPH15/20/25-4-130	15/20/25	4	1.25/1.25/1.5	2.5	60	20	3/4" / 1" / 1 1/2"	130x138x125	2.4	2.8	0.003
XPH15/20/25-5-130	15/20/25	5	1.25/1.25/1.5	3.5	80	30	3/4" / 1" / 1 1/2"	130x138x125	2.5	3.0	0.003
XPH15/20/25-6-130	15/20/25	6	1.25/1.25/1.5	4.5	90	35	3/4" / 1" / 1 1/2"	130x138x125	2.5	3.0	0.003
XPH25/32-4-180	25/32	4	1.5/1.5	2.2	60	20	1 1/2"/2"	180x138x130	2.8	3.4	0.004
XPH25/32-5-180	25/32	5	1.5/1.5	3.2	80	30	1 1/2"/2"	180x138x130	2.9	3.5	0.004
XPH25/32-6-180	25/32	6	1.5/1.5	4.2	90	35	1 1/2"/2"	180x138x130	2.9	3.5	0.004

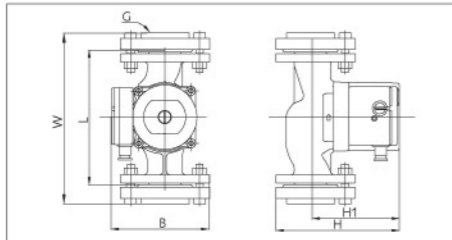
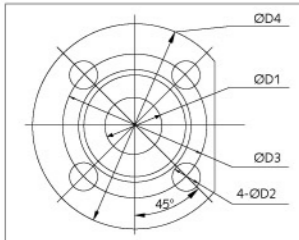
CIRCULATION PUMP

ZP(ZPS) / XPS

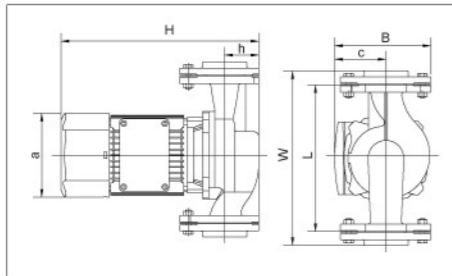


Technical Data

Model	Diameter of inlet and outlet (mm)	Max. Head (m)	Rated flow (m³/h)	Rated head (m)	Input power (w)	Rated power (w)	G	Dimension(mm) LXBXH	Weight(kg)		Volume (m³)
									N.W.	G.W.	
ZP15-9-160	15	9	0.5	7	120	50	3/4"	160x105x125	2.5	2.7	0.003
ZPS15-9-140	15	9	0.5	7	120	50	3/4"	160x105x125	2.5	2.8	0.003
ZPS20-12-180	20	12	1.25	10	245	120	1"	180x150x160	4.5	5.0	0.006
XPS15-4-130	15	4	1.25	2.5	60	20	3/4"	130x125x120	2.3	2.6	0.003
XPS15-5-130	15	5	1.25	3.5	80	30	3/4"	130x125x120	2.3	2.6	0.003
XPS15-6-130	15	6	1.25	4.5	90	35	3/4"	130x125x120	2.3	2.6	0.003
XPS15-9-140	15	9	1.25	7	120	50	3/4"	140x105x125	2.3	2.5	0.003
XPS20-4-130	20	4	1.25	2.5	60	20	1"	130x125x125	2.4	2.8	0.003
XPS20-5-130	20	5	1.25	3.5	80	30	1"	130x125x125	2.4	2.8	0.003
XPS20-6-130	20	6	1.25	4.5	90	35	1"	130x125x125	2.4	2.8	0.003
XPS20-12-180	20	12	1.25	10	245	120	1"	180x150x160	4.3	4.8	0.006
XPS25-4-130	25	4	1.5	2.2	60	20	1 1/2"	130x125x127	2.5	3.0	0.003
XPS25-4-180	25	4	1.5	2.2	60	20	1 1/2"	180x125x127	2.7	3.2	0.004
XPS25-5-130	25	5	1.5	3.2	80	30	1 1/2"	130x125x127	2.5	3.0	0.003
XPS25-5-180	25	5	1.5	3.2	80	30	1 1/2"	180x125x127	2.7	3.2	0.004
XPS25-6-130	25	6	1.5	4.2	90	35	1 1/2"	130x125x127	2.5	3.0	0.003
XPS25-6-180	25	6	1.5	4.2	90	35	1 1/2"	180x125x127	2.7	3.2	0.004
XPS25-8-180	25	8	3.2	5.5	200	90	1 1/2"	180x150x160	4.3	4.8	0.006
XPS25-12-180	25	12	1.25	10	245	120	1 1/2"	180x150x160	4.5	5.0	0.006
XPS32-4-180	32	4	1.5	2.2	60	20	2"	180x125x133	2.9	3.5	0.004
XPS32-5-180	32	5	1.5	3.2	80	30	2"	180x125x133	2.9	3.5	0.004
XPS32-6-180	32	6	1.5	4.2	90	35	2"	180x125x133	2.9	3.5	0.004
XPS32-8-180	32	8	3.2	5.5	245	120	2"	180x150x170	4.5	5.0	0.006
XPS32-5F-220	32	5	3.2	3.5	145	60	DN32	220x150x190	7.0	7.5	0.01
XPS32-8F-220	32	8	3.2	5.5	245	120	DN32	220x150x190	7.5	8.0	0.01



Model	D1	D2	D3	D4
DN40	40	14	100	130
DN50	50	14	110	140
DN65	65	14	130	160



Technical Data

Model	Diameter of inlet and outlet (mm)	Max. Head (m)	Rated Flow (m ³ /h)	Rated head (m)	Input power (w)	Rated power (w)	G	Dimension(mm) LXBXH	Weight(kg)		Volume (m ³)
									N.W.	G.W.	
XP32-9-220	32	9	5	5	300	150	2"	220x180x230	7	8	0.02
XP32-12-220	32	12	5	8	480	280	2"	220x180x230	8	9	0.02
XP32-16-230	32	16	5	12.5	700	400	2"	230x220x255	12	13	0.022
XP32-18-230	32	18	5	16	1000	600	2"	230x220x255	15	16	0.022
XP40-6F-250	40	6	12.5	4	400	280	DN40	250x180x230	11	13	0.02
XP40-9F-250	40	9	8	5	480	280	DN40	250x180x230	11	13	0.02
XP40-12F-250	40	12	8	8	700	400	DN40	250x220x260	15	16	0.022
XP40-16F-250	40	16	8	12.5	1000	600	DN40	250x220x260	18	20	0.022
XP40-18F-250	40	18	8	16	1200	750	DN40	250x240x330	26	28	0.026
XP50-9F-280	50	9	12.5	5	700	400	DN50	280x220x280	17	20	0.026
XP50-12F-280	50	12	12.5	8	1000	600	DN50	280x220x280	18	21	0.026
XP50-16F-280	50	16	12.5	12.5	1200	750	DN50	280x240x330	24	27	0.028
XP65-9F-300	65	9	20	5	1000	600	DN65	300x220x300	19	22	0.028
XP65-12F-300	65	12	20	8	1200	750	DN65	300x240x330	26	29	0.03

Model	Supply voltage	Input power (W)	Output power (W)	Rated Flow (m ³ /h)	Rated head (m)	Max. Flow (m ³ /h)	Max. Head (m)	Diameter (mm) (G)
CPHb04-25/32F	220V/50Hz	80	40	1.7	2.5	3	4	25(1") / 32(1 1/4")
CPHb10-50/40F		160	100	3.2	3.5	8	5	50(2") / 40(1 1/2")
CPHb12-50/40F		245	120	3.2	5.5	9	8	50(2") / 40(1 1/2")
CPH25-50/65/80F	380V/50Hz	400	250	6	8.0	12	12	50(2") / 65(2 1/2") / 80(3")
CPH40-50/65/80F		900	400	10	10	17	17	50(2") / 65(2 1/2") / 80(3")
CPH110-50/65/80F		1500	1100	13	13	21	21	50(2") / 65(2 1/2") / 80(3")
CPHs150-40/50F		1800	1500	15	15	25	25	40(1 1/2") / 50(2")
CPHs220-40/50F		3000	2200	18	20	30	30	40(1 1/2") / 50(2")

Application

Series	Domestic use	Agricultural irrigation	Garden irrigation	Pressurized pipeline
QB	✓	-	✓	✓
SQ(m)	✓	-	✓	✓
JET	✓	-	✓	✓
SGJW	✓	-	✓	✓
SGJS	✓	-	✓	✓
SCm	✓	✓	-	-
CP(m)	✓	✓	-	-
SHF(m)	✓	✓	-	-
2SGP(m)	✓	✓	-	-
SGT	✓	✓	-	-
WZB	✓	-	✓	✓
AWZB	✓	-	✓	✓

Remark: All the surface pumps must pump clean water without abrasive particles / non-aggressive liquid and the pumps must be installed in enclosed places, or at least protected against inclement weather.

Material

Series	Pump body	Motor bracket	Impeller	Shaft with rotor	Mechanical seal
QB	Cast iron	Aluminum	Brass	SS or CS45#	Ceramic-graphite
SQ(m)	Cast iron	Aluminum	Brass	SS or CS45#	Ceramic-graphite
JET	Cast iron	Aluminum	Brass / POM	SS or CS45#	Ceramic / Graphite or Silicon carbide / Graphite
SGJW	Cast iron	Aluminum	Brass / Nylon	SS or CS45#	Ceramic / Graphite
SGJS	SS	Aluminum	POM	2Cr13 stainless iron	Silicon carbide / Graphite
SCm	Cast iron	Aluminum	Brass / Nylon	SS or CS45#	Ceramic / Graphite / Carbon
CP(m)	Cast iron	Aluminum	Brass / Nylon	SS or CS45#	Ceramic / Graphite
SHF(m)	Cast iron	Aluminum	Brass / Cast iron	SS or CS45#	Graphite / Ceramic
2SGP(m)	Cast iron	Aluminum	Brass / SS 304	SS 304 and CS45#	Silicon carbide / Graphite
SGT	Cast iron	Aluminum	Cast iron	SS 304 and CS45#	Silicon carbide / Graphite
WZB	Cast iron	Aluminum / Cast iron	Brass	SS or CS45#	Silicon carbide / Graphite
AWZB	Cast iron	Aluminum	Brass	SS or CS45#	Silicon carbide / Graphite

Operating Conditions

Series	Max.suction lift	Max.liquid temp.	Max.ambient temp.	Max.working pressure
QB	8m	+40°C	+40°C	6 bar
SQ(m)	8m	+40°C	+40°C	6 bar
JET	9m	+40°C	+40°C	6 bar
SGJW	9m	+40°C	+40°C	6 bar
SGJS	9m	+40°C	+40°C	6 bar
SCm	7m	+40°C	+40°C	6 bar
CP(m)	7m	+40°C	+40°C	6 bar
SHF(m)	7m	+60°C	+40°C	6 bar
2SGP(m)	8m	+60°C	+40°C	6 bar
SGT	8m	+60°C	+40°C	8 bar
WZB	8m	+40°C	+40°C	6 bar
AWZB	8m	+90°C	+40°C	6 bar

Motor

Series	Pole	Insulation	Protection	Thermal protection	Cooper winding
QB	2 pole induction motor (50hz/60hz)	Class B	IP 44	✓	✓
SQ(m)		Class B	IP 44	✓	✓
JET		Class B	IP 44	✓	✓
SGJW		Class B	IP 44	✓	✓
SGJS		Class B	IP 44	✓	✓
SCm		Class B	IP 44	✓	✓
CP(m)		Class B	IP 44	single phase ✓	✓
SHF(m)		Class B	IP 44	-	✓
2SGP(m)		Class B	IP 44	-	✓
SGT		Class B	IP 55	-	✓
WZB	Class B	IP 44	✓	✓	
AWZB	Class B	IP 44	✓	✓	

QB/SQ(m)/SGJW/JET

SURFACE PUMP



QB



SQ(m)



SGJW



JET

Technical Data RPM: n=2850 r/min(50HZ); n=3450 r/min (60HZ)

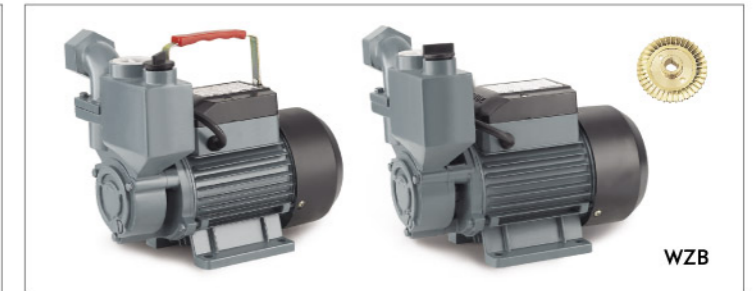
Model	Power		Inlet (Inch)	Outlet (Inch)	Max. Flow (m³/h)	Max. Head (m)	Max. Suction (m)	Dim. (mm)	G.W. (kg)	20' Loading Qty (pcs)
	kW	HP								
QB60	0.37	0.5	1	1	1.6	33	8	280×140×170	5.3	3600
QB70	0.55	0.75	1	1	2.4	48	8	335×190×210	9	2100
QB80	0.75	1	1	1	3	60	8	340×190×210	9.5	2100
SQm60	0.37	0.5	1	1	1.6	33	8	280×140×170	5.3	3800
SGJW37	0.37	0.5	1	1	2.5	32	8	390×190×230	9.5	1700
SGJW55	0.55	0.75	1	1	3	41	9	475×195×240	17	1200
SGJW75	0.75	1	1	1	5.4	46	9	475×195×240	18	1150
SGJW110	1.1	1.5	1	1	6	52	9	475×195×240	18.5	1100
JET80L	0.55	0.75	1	1	2.5	42	9	475×190×220	17.5	1200
JET100P	0.75	1	1	1	3.5	46	9	475×190×220	18	1150
JET100L	0.75	1	1	1	3.5	46	9	475×190×220	18.5	1100

SURFACE PUMP

SGJS/WZB/AWZB/AWZB-H



SGJS



WZB



AWZB



AWZB-H

Technical Data RPM: n=2850 r/min(50HZ); n=3450 r/min (60HZ)

Model	Power		Inlet (Inch)	Outlet (Inch)	Max. Flow (m³/h)	Max. Head (m)	Max. Suction (m)	Dim. (mm)	G.W. (kg)	20' Loading Qty (pcs)
	kW	HP								
SGJS400(N)	0.4	0.54	1	1	2.4	28	9	350×195×215	6	1950
SGJS600(N)	0.6	0.8	1	1	2.4	35	9	350×195×215	6.4	1950
SGJS800(N)	0.8	1.1	1	1	3	42	9	410×210×240	9	1400
SGJS1100(N)	1.1	1.5	1	1	3.6	45	9	410×210×240	9.7	1400
1WZB-35	0.37	0.5	1	1	2	30	8	290×175×240	9	2300
1WZB-45	0.55	0.75	1	1	2.5	40	8	300×185×260	11.5	1800
1WZB-65	0.75	1	1	1	3.5	50	8	315×200×265	14	1240
1.5WZB-50	1.1	1.5	1.5	1.5	5	50	8	310×210×305	18.5	1100
1WZB-35A	0.37	0.5	1	1	2	30	8	270×180×235	8	2500
1WZB-45A	0.55	0.75	1	1	2.5	40	8	285×185×260	10	2050
1WZB-65A	0.75	1	1	1	3.5	50	8	285×185×260	12	1700
1WZB-35T	0.37	0.55	1	1	2	30	8	275×200×260	9.5	2000
1WZB-45T	0.55	0.75	1	1	2.5	40	8	285×205×275	12.5	1600
1WZB-65T	0.75	1	1	1	3.5	50	8	285×205×275	14.5	1400
1AWZB125	0.125	0.17	1	1	1.8	24	8	280×225×305	9	1470
1AWZB250	0.25	0.34	1	1	2	28	8	280×225×305	10	1470
1AWZB370	0.37	0.5	1	1	2.2	32	8	280×225×305	11	1470
1AWZB550	0.55	0.75	1	1	2.8	38	8	310×235×330	13	1160
1AWZB750	0.75	1	1	1	3	44	8	345×250×335	14.5	960
1.5AWZB1100	1.1	1.5	1.5	1.5	4.5	50	8	360×280×370	18.5	730
1AWZB125H	0.125	0.17	1	1	1.8	24	8	300×225×305	8.5	1200
1AWZB250H	0.25	0.34	1	1	2	28	8	300×225×305	9	1200
1AWZB370H	0.37	0.5	1	1	2.2	32	8	310×225×305	9.5	1100
1AWZB550H	0.55	0.75	1	1	2.8	38	8	330×230×335	13	1000
1AWZB750H	0.75	1	1	1	3	44	8	330×230×335	13.5	1000

CP(m)/SQm/SHFm/2SGP(m)

SURFACE PUMP



CP(m)



2SGP(m)



SHFm / SGAm

Technical Data RPM: n=2850 r/min(50HZ); n=3450 r/min (60HZ)

Model		Power		Inlet (Inch)	Outlet (Inch)	Max. Flow (m³/h)	Max. Head (m)	Max. Suction (m)	Dim. (mm)	G.W.(kg)		20' Loading Qty (pcs)
Single-Phase	Three-Phase	kW	HP							G(s)	G(t)	
CPm130	-	0.37	0.5	1	1	5.5	22	7	280×185×230	9.5	-	2200
CPm146	-	0.55	0.75	1	1	6	26	7	340×210×265	12.5	-	1550
CPm158	-	0.75	1	1	1	6.5	32	7	340×210×265	13.5	-	1500
CPm170	CP170	1.1	1.5	1.25	1	7.2	44	7	390×240×290	22	20.5	900
CPm190	CP190	1.6	2.2	1	1	7.2	52	7	390×260×320	26	25	800
CPm200	CP200	2.2	3	1	1	8	59	7	455×280×340	33.5	30	600
SGAm1A	-	0.75	1	1.5	1.5	12	17	7	350×235×255	13	-	1250
SGAm1B	-	0.55	0.75	1.5	1.5	12	14	7	350×235×255	12	-	1250
SHFm5A	-	1.1	1.5	2	2	21	14	7	365×240×265	14	-	1200
SHFm5B	-	0.75	1	2	2	21	11	7	365×240×265	13	-	1200
SHFm5AM	SHF5AM	1.5	2	2	2	30	22.5	7	425×250×295	25	24.5	800
SHFm5BM	-	1.1	1.5	2	2	30	20.2	7	425×250×295	24	-	850
SHFm6A	SHF6A	2.2	3	3	3	72	18.5	7	510×295×355	37	37	540
SHFm6B	-	1.5	2	3	3	66	14.7	7	460×285×345	32	-	630
SHFm6C	-	1.1	1.5	3	3	60	11.9	7	460×285×345	31	-	630
SHFm6AR	SHF6AR	2.2	3	4	4	72	18.5	7	510×295×355	39	39	530
SHFm6BR	-	1.5	2	4	4	66	14.7	7	460×285×345	33	-	630
SHFm6CR	-	1.1	1.5	4	4	60	11.9	7	460×285×345	32	-	630
2SGPm25/130	2SGP25/130	0.75	1	1.25	1	5.1	42	8	385×235×280	17	16.5	1130
2SGPm25/140	2SGP25/140	1.1	1.5	1.5	1	8.4	42	8	445×255×300	24	23	830
2SGPm25/160B	2SGP25/160B	1.5	2	1.5	1	9.6	50	8	445×255×300	26	25	800

SURFACE PUMP

SGT



SGT

Technical Data RPM: n=2850 r/min(50HZ); n=3450 r/min (60HZ)

Model	Power		Inlet (Inch)	Outlet (Inch)	Max. Flow (m³/h)	Max. Head (m)	Max. Suction (m)	Dim. (mm)	G.W. (kg)	20' Loading Qty (pcs)
	Three-Phase	HP								
SGT32-160/1.5	1.5	2	2	1.25	20	21	8	490×285×355	35	570
SGT32-160/2.2	2.2	3	2	1.25	20	28	8	520×285×355	40	500
SGT32-160/3	3	4	2	1.25	20	35	8	610×305×395	42	400
SGT32-200/4	4	5.5	2	1.25	20	45	8	640×345×445	57	300
SGT32-200/5.5	5.5	7.5	2	1.25	20	58	8	660×345×460	65	300
SGT32-200/7.5	7.5	10	2	1.25	20	70	8	700×345×460	79	250
SGT40-125/1.5	1.5	2	2.5	1.5	24	18	8	490×255×315	34	600
SGT40-125/2.2	2.2	3	2.5	1.5	24	24	8	520×255×315	40	500
SGT40-160/3	3	4	2.5	1.5	30	28	8	625×305×395	48	380
SGT40-160/4	4	5.5	2.5	1.5	30	36	8	665×305×395	55	350
SGT40-200/5.5	5.5	7.5	2.5	1.5	38	42	8	685×330×470	66	270
SGT40-200/7.5	7.5	10	2.5	1.5	38	52	8	735×330×470	80	250

Summary of Submersible Pumps

Application

Series	Well pumping	River pumping	Flowing collection	Pumping water from cellars, garages, basement	Water supply	Drainage in breeding industry	Handling waste water
WSD(T)	√	√	√	√	√	√	√
Q(D)X-H1	√	√	√	√	√	√	-
Q(D)X-K1	√	√	√	√	√	√	-
Q(D)X-L1	√	√	√	√	√	√	-
Q(D)X	√	√	√	√	√	√	-
Q(D)X-T	√	√	√	√	√	√	-
Q(D)X(J)	√	√	√	√	√	√	-

Operating Conditions

Series	Submersible depth	Max. liquid temp.	Max. ambient temp.	Max. grain size
WSD(T)	5m	+40°C	+40°C	35/50mm
Q(D)X-H1	5m	+40°C	+40°C	2mm
Q(D)X-K1	5m	+40°C	+40°C	2mm
Q(D)X-L1	5m	+40°C	+40°C	2mm
Q(D)X	5m	+40°C	+40°C	2mm
Q(D)X-T	5m	+40°C	+40°C	2mm
Q(D)X(J)	5m	+40°C	+40°C	2mm

Motor

Series	Pole	Insulation	Protection	Thermal protection	Cooper winding
WSD(T)	2 pole induction motor (50hz/60hz)	Class E	IP X8	√	√
Q(D)X-H1		Class F	IP X8	single phase	√
Q(D)X-K1		Class E	IP X8	single phase	√
Q(D)X-L1		Class E	IP X8	single phase	√
Q(D)X		Class E	IP X8	single phase	√
Q(D)X-T		Class E	IP X8	single phase	√
Q(D)X(J)		Class E	IP X8	single phase	√

Material

Series	Pump body	Motor bracket	Impeller	Shaft with rotor	Mechanical seal
WSD(T)	SS 304 or Cast iron	SS 304	SS 304	SS 304 and CS45#	Ceramic-graphite
Q(D)X-H1	Aluminum/Cast iron	Aluminum	PPO	CS45#	Ceramic-graphite
Q(D)X-K1	Aluminum/Cast iron	Aluminum	Aluminum	CS45#	Ceramic-graphite
Q(D)X-L1	Aluminum/Cast iron	Aluminum	Aluminum	CS45#	Ceramic-graphite
Q(D)X	Aluminum/Cast iron	Aluminum	Aluminum	CS45#	Ceramic-graphite
Q(D)X-T	Cast iron	Cast iron	Aluminum	CS45#	Ceramic-graphite
Q(D)X(J)	Cast iron	Cast iron	Aluminum	CS45#	Ceramic-graphite

Q(D)X(J)

SUBMERSIBLE PUMP

Technical Data RPM: n=2850 r/min(50HZ); n=3450 r/min (60HZ)

Model		Power		Outlet (Inch)	Max. Flow (m³/h)	Max. Head (m)	Dim. (mm)		G.W.(kg)		20' (Loading Qty)(pcs)
Single-Phase	Three-Phase	kW	HP				Single-Phase	Three-Phase	G(s)	G(t)	
QD3-30/2-0.75	Q3-30/2-0.75	0.75	1	1	5	33	-	480×220×215	22.5	20.5	800
QD3-45/3-1.1	Q3-45/3-1.1	1.1	1.5	1	4.5	53	-	525×220×215	25.5	24.5	720
QD6-32/2-1.1	Q6-32/2-1.1	1.1	1.5	1.25	14	37	-	525×220×215	25.5	26	720
QD3-55/4-1.5J	Q3-55/4-1.5J	1.5	2	1	5	64	-	600×220×215	30.5	26.5	600
QD10-26/2-1.5J	Q10-26/2-1.5J	1.5	2	2	20	38	-	570×220×215	28.5	26.5	600
QD10-30/3-1.5J	Q10-30/3-1.5J	1.5	2	2	20	37	-	600×220×215	30.5	28.5	600
QD3-82/5-1.8J	Q3-82/5-1.8J	1.8	2.5	1	6	88	-	705×220×273	41	39	450
QD12-36/3-1.8J	Q12-36/3-1.8J	1.8	2.5	2	20	45	670×205×275	640×205×278	38	39	450
QD3-96/6-2.2J	Q3-96/6-2.2J	2.2	3	1	8	104	770×220×273	705×220×273	45	43	450
-	Q3-112/7-3J	3	4	1	9	120	-	770×220×273	-	50	400



SUBMERSIBLE PUMP

WSD(T)/Q(D)X-H1



Technical Data

RPM: n=2850 r/min(50HZ); n=3450 r/min (60HZ)

Model	Power	Outlet (Inch)	Max. Flow (m³/h)	Max. Head (m)	Dim. (mm)		G.W. (kg)		20' (Loading Qty) (pcs)
					Single-Phase	Three-Phase	G(s)	G(t)	
WSD55/35	0.55	2	18	8.5	230×200×465	-	9.5	-	1350
WSD55/35T	0.55	2	18	8	230×200×465	-	12.5	-	1350
WSD75/35	0.75	2	22	10	230×200×465	-	10.5	-	1350
WSD75/35T	0.75	2	22	9.5	230×200×465	-	13.5	-	1350
WSD55/50	0.55	2	17	7.5	230×200×465	-	9.5	-	1350
WSD55/50T	0.55	2	16	7.5	230×200×465	-	12.5	-	1350
WSD75/50	0.75	2	20	9.5	230×200×465	-	11.5	-	1350
WSD75/50T	0.75	2	20	9.5	230×200×465	-	15	-	1350
QDX1.5-17-0.37H1	0.37	1	6	18	395×160×200	-	7.5	-	2200
QDX1.5-25-0.55H1	0.55	1	6	26	410×195×215	-	10.5	-	1600
QDX3-18-0.55H1	0.55	1.25	7	20.5	410×165×205	-	10.5	10.5	1900
QDX10-12-0.55H1	0.55	1.5	14	16.5	410×170×225	-	10.5	-	1800
QDX15-7-0.55H1	0.55	2	24	8.5	420×170×230	-	10.5	-	1700
QDX1.5-32-0.75H1	0.75	1	8	34	435×200×220	-	12.5	12.5	1400
QDX3-24-0.75H1	0.75	1	8.5	25.5	430×195×215	-	12.5	-	1500
QDX8-18-0.75H1	0.75	1.5	19.5	20	435×170×220	-	12.5	12.5	1600
QDX10-16-0.75H1	0.75	2	19.5	20	435×170×220	-	12	12	1600
QDX15-10-0.75H1	0.75	2.5	36	12	440×180×240	-	12	-	1450
QDX30-6-0.75H1	0.75	3	45	11.5	470×205×270	-	16.5	16.5	1100
QDX3-30-1.1H1	1.1	1	9.5	30	455×195×215	-	13.5	13.5	1400
QDX6-25-1.1H1	1.1	1.5	16	25	460×195×228	-	13.5	13.5	1400
QDX15-14-1.1H1	1.1	2.5	28	17	465×190×255	-	16.5	16.5	1200
QDX14-16-1.1H1	1.1	2.5	28	17	465×190×255	-	15.5	15.5	1250
QDX40-6-1.1H1	1.1	3	60	8	485×205×270	-	18.0	18.0	1050
-	QX25-12-1.5H1	1.5	2	48	485×190×250	-	-	18.0	1100
-	QX40-9-1.5H1	1.5	2	60	510×205×270	-	-	19.5	1000

Q(D)X-K1/Q(D)X-L1

SUBMERSIBLE PUMP



Technical Data

RPM: n=2850 r/min(50HZ); n=3450 r/min (60HZ)

Model		Power		Outlet (Inch)	Max. Flow (m³/h)	Max Head (m)	Dim. (mm)		G.W. (kg)		20" Loading Qty (pcs)''
Single-Phase	Three-Phase	kW	HP				Single-Phase	Three-Phase	G(s)	G(t)	
QDX1.5-17-0.37K1	-	0.37	0.5	1	6	17.5	385×160×220	-	7.5	-	2200
QDX1.5-25-0.55K1	-	0.55	0.75	1	4.5	25.5	395×190×220	-	10	-	1800
QDX3-18-0.55K1	-	0.55	0.75	1	7.9	19.5	410×180×220	-	10	-	1830
QDX10-12-0.55K1	-	0.55	0.75	2	15	18.5	410×210×220	-	10	-	1830
QDX15-7-0.55K1	-	0.55	0.75	2	22	8	410×210×220	-	10	-	1830
QDX1.5-32-0.75K1	-	0.75	1	1	6	32.5	420×210×230	-	12	-	1500
QDX3-24-0.75K1	-	0.75	1	1	9	25	410×190×220	-	12	-	1600
QDX8-18-0.75K1	-	0.75	1	2	15	20	420×190×230	-	11.5	-	1600
QDX10-16-0.75K1	-	0.75	1	2	15	20	420×190×230	-	11.5	-	1600
QDX15-10-0.75K1	-	0.75	1	3	36	12	420×220×240	-	12	-	1350
QDX25-6-0.75K1	-	0.75	1	3	32	9.5	420×220×260	-	12	-	1300
QDX30-6-0.75K1	-	0.75	1	3	43	8.5	450×220×285	-	15	-	1150
QDX3-30-1.1K1	QX3-30-1.1K1	1.1	1.5	1	9.5	30	455×285×225	455×285×225	13.5	12	1000
QDX6-25-1.1K1	QX6-25-1.1K1	1.1	1.5	2	16	25	465×285×225	465×285×225	14.5	13.5	900
QDX14-16-1.1K1	-	1.1	1.5	2.5	28	17	465×285×225	-	16.5	-	900
QDX15-14-1.1K1	QX15-14-1.1K1	1.1	1.5	2.5	28	17	465×285×225	465×285×225	16.5	15.5	850
QDX40-6-1.1K1	QX40-6-1.1K1	1.1	1.5	3	52	10	490×285×225	490×285×225	18	16.5	850
QDX50-7-1.5K1	-	1.5	2	4	68	13	540×325×230	-	24	-	700
-	QX25-12-1.5K1	1.5	2	2.5	42	15	-	495×285×225	-	17.5	900
-	QX40-9-1.5K1	1.5	2	3	60	11	-	525×285×225	-	18.5	850
QDX1.5-12-0.25L1	-	0.25	0.37	1	4	12	360×160×200	-	4.5	5	2500
QDX1.5-17-0.37L1	-	0.37	0.5	1	6	17.5	385×160×220	-	6.5	7	2100
QDX1.5-25-0.55L1	-	0.55	0.75	1	4.5	25.5	395×190×220	-	9.0	9.5	1700
QDX3-18-0.55L1	-	0.55	0.75	1.25	7.9	19.5	410×180×220	-	9.0	9.5	1700
QDX10-12-0.55L1	-	0.55	0.75	1.5	15	18.5	410×210×220	-	9.0	9.5	1500
QDX15-7-0.55L1	-	0.55	0.75	2	22	8	410×210×220	-	9.0	9.5	1500
QDX1.5-32-0.75L1	-	0.75	1	1	6	32.5	420×210×230	-	11.0	11.5	1430
QDX3-24-0.75L1	-	0.75	1	1.25	9	25	410×190×220	-	11.0	11.5	1700
QDX8-18-0.75L1	-	0.75	1	1.5	15	20	420×190×230	-	10.5	11	1500
QDX10-16-0.75L1	-	0.75	1	2	15	20	420×190×230	-	10.5	11	1500
QDX15-10-0.75L1	-	0.75	1	2.5	36	12	420×220×240	-	11.0	11.5	1300
QDX25-6-0.75L1	-	0.75	1	3	32	9.5	420×220×260	-	11.0	11.5	1000
QDX30-6-0.75L1	-	0.75	1	3	43	8.5	450×220×285	-	14.0	14.5	1200
-	QX8-18-0.75L1	0.75	1	1.5	15	20	-	420×190×230	10.0	10.5	1550
-	QX10-16-0.75L1	0.75	1	2	15	20	-	420×190×230	10.0	10.5	1550
-	QX30-6-0.75L1	0.75	1	3	43	8.5	-	450×220×285	13.5	14	1000

SUBMERSIBLE PUMP

Q(D)X/Q(D)X-T



Technical Data

RPM: n=2850 r/min(50HZ); n=3450 r/min (60HZ)

Model		Power		Outlet (Inch)	Max. Flow (m³/h)	Max Head (m)	Dim. (mm)	G.W. (kg)		20" Loading Qty (pcs)''
Single-Phase	Three-Phase	kW	HP					G(s)	G(t)	
QDX1.5-12-0.25	-	0.25	0.37	1	4	12	365×165×173	5	-	2850
QDX1.5-17-0.37	-	0.37	0.5	1	6	17.5	370×160×203	7	-	2400
QDX1.5-25-0.55	-	0.55	0.75	1	4.5	25.5	370×105×218	10	-	1900
QDX3-18-0.55	-	0.55	0.75	1.25	7.9	19.5	370×195×213	10	-	1900
QDX10-12-0.55	-	0.55	0.75	1.5	15	18.5	370×195×213	10	-	1900
QDX15-7-0.55	-	0.55	0.75	2	22	8	370×195×238	10	-	1700
QDX1.5-32-0.75	-	0.75	1	1	6	32.5	380×220×228	12	-	1500
QDX3-24-0.75	-	0.75	1	1.25	9	25	395×195×208	12	-	1500
QDX8-18-0.75	-	0.75	1	1.5	15	20	395×195×228	11.5	-	1600
QDX10-16-0.75	-	0.75	1	2	15	20	395×195×233	11.5	-	1600
QDX15-10-0.75	-	0.75	1	2.5	36	12	395×195×253	12	-	1500
QDX25-6-0.75	-	0.75	1	3	32	9.5	400×170×258	12	-	1600
QDX3-30-1.1	QX3-30-1.1	1.1	1.5	1	9.5	30	440×220×205	13.5	12	1400
QDX15-14-1.1	QX15-14-1.1	1.1	1.5	2.5	28	17	425×280×200	16	15	1200
QDX40-6-1.1	QX40-6-1.1	1.1	1.5	3	52	10	450×280×200	18	17	1100
-	QX40-9-1.5	1.5	2	3	60.5	11.2	450×280×200	-	18	1000
-	QX25-12-1.5	1.5	2	2.5	42	15	425×280×200	-	17	1100
QDX1.5-17-0.37T	-	0.37	0.5	1	6	17.5	380×230×210	11.5	-	1800
QDX1.5-25-0.55T	-	0.55	0.75	1	6	26	395×270×240	15.5	-	1300
QDX3-18-0.55T	-	0.55	0.75	1.25	7.5	20	395×270×240	15.0	-	1300
QDX10-12-0.55T	-	0.55	0.75	1.5	14	15.5	395×270×240	15.5	-	1200
QDX15-7-0.55T	-	0.55	0.75	2	22	8	395×270×240	17.5	-	1200
QDX1.5-32-0.75T	QX1.5-32-0.75T	0.75	1	1	6	32.5	395×270×240	17.5	16.5	1100
QDX3-24-0.75T	-	0.75	1	1.25	6	24.5	395×270×240	16.5	-	1200
QDX8-18-0.75T	-	0.75	1	1.5	15	20	395×270×240	17	-	1100
QDX10-16-0.75T	-	0.75	1	2	15	20	395×270×240	17	-	1100
QDX15-10-0.75T	-	0.75	1	2.5	29	13	395×270×240	17	-	1100
QDX30-6-0.75T	QX30-6-0.75T	0.75	1	3	43	8.5	445×280×220	21.5	20	1000
QDX6-25-1.1	QX6-25-1.1	1.1	1.5	2	16	25	465×255×245	28	28	775
QDX40-6-1.1T	QX40-6-1.1T	1.1	1.5	3	52	10	480×285×220	23	23	1100
-	QX40-9-1.5T	1.5	2	2.5	60.5	11.2	480×285×220	-	23	1000
-	QX25-12-1.5	1.5	2	2.5	42	15	425×280×200	-	17	1100
-	QX10-34-2.2	2.2	3	2	20	38.5	575×250×323	-	40.5	520
-	QX12.5-50-4	4	5.5	2	30	56.5	840×315×360	-	73	280
-	QX12.5-60-5.5	5.5	7.5	2	31	63.5	890×315×360	-	85	240

Summary of Sewage Pumps

Application

Series	Domestic use	Commercial use	Industrial use	Handling waste water	Drainage of sewage
WVS(D)-F	✓	✓	✓	✓	✓
WQ(D)S	✓	✓	✓	✓	✓
WQXD	✓	✓	✓	✓	✓
WQ(D)AS	✓	✓	✓	✓	✓
WQK	✓	✓	✓	✓	✓
DWE	✓	✓	✓	✓	✓
WQ(D)	✓	✓	✓	✓	✓
WQ(D)-B	✓	✓	✓	✓	✓
WQ	✓	✓	✓	✓	✓
WQ-multistage	✓	✓	✓	✓	✓

Motor

Series	Pole	Insulation	Protection	Thermal protection
WVS(D)-F	2 pole induction motor (50hz/60hz)	Class B	IP 68	✓
WQ(D)S		Class E	IP X8	single phase ✓
WQXD		Class E	IP X8	✓
WQ(D)AS		Class E	IP X8	single phase ✓
WQK		Class E	IP X8	-
DWE		Class E	IP X8	single phase ✓
WQ(D)		Class E	IP X8	single phase ✓
WQ(D)-B		Class E	IP X8	single phase ✓
WQ-multistage		Class E	IP X8	-
WQ		4 pole induction motor (50hz/60hz)	Class E	IP X8

Operating Conditions

Series	Submersible depth	Max.liquid temp.	Max.ambient temp.	Max.working pressure	Max.grain size
WVS(D)-F	5m	+40°C	+40°C	6 bar	45mm
WQ(D)S	5m	+40°C	+40°C	6 bar	50mm
WQXD	5m	+40°C	+40°C	6 bar	35mm
WQ(D)AS	5m	+40°C	+40°C	6 bar	35mm
WQK	5m	+40°C	+40°C	6 bar	35mm
DWE	5m	+40°C	+40°C	6 bar	30mm
WQ(D)	5m	+40°C	+40°C	6 bar	35mm
WQ(D)-B	5m	+40°C	+40°C	6 bar	35mm
WQ	5m	+40°C	+40°C	6 bar	80mm
WQ-multistage	5m	+40°C	+40°C	21bar	12mm

Material

Series	Pump body	Motor bracket	Impeller	Motor shaft	Mechanical seal
WVS(D)-F	Cast iron	SS	Cast iron	SS316 & CS45#	Ceramic-graphite, Silicon carbide-Carbide alloy
WQ(D)S	Cast iron	SS	Cast iron	SS420 or SS316 & CS45#	Ceramic-graphite, Silicon carbide-Carbide alloy
WQXD	Cast iron	SS	Brass	SS420	Ceramic-graphite, Silicon carbide-Carbide alloy
WQ(D)AS	Cast iron	Cast iron	Ductile iron	SS316 & CS45#	Ceramic-graphite, Silicon carbide-Carbide alloy
WQK	Cast iron	Cast iron	Cast iron	SS420	Ceramic-graphite, Silicon carbide-Carbide alloy
DWE	Cast iron	Cast iron	Cast iron	SS420orCS45#or40Cr	Ceramic-graphite, Silicon carbide-Carbide alloy
WQ(D)	Cast iron	Cast iron	Cast iron	SS420	Ceramic-graphite, Silicon carbide-Carbide alloy
WQ(D)-B	Cast iron	Cast iron	Cast iron	SS420orSS316&CS45#	Ceramic-graphite, Silicon carbide-Carbide alloy
WQ	Cast iron	Cast iron	Cast iron	SS420	Ceramic-graphite, Silicon carbide-Carbide alloy
WQ-multistage	Cast iron	Cast iron	Cast iron	40Cr	Ceramic-graphite, Silicon carbide-Carbide alloy

SEWAGE PUMP

WQ(D)S/WQXD/WQS/QT



Technical Data

RPM: n=2850 r/min(50HZ); n=3450 r/min (60HZ)

Model	Power		Outlet (Inch)	Max. Flow (m³/h)	Max. Head (m)	The max. flow particle (mm)	Dim. (mm)	G.W. (kg)	N.W. (kg)	20' Loading Qty (pcs)		
	Single-Phase	Three-Phase									kW	HP
WQDS7-7-0.55	-	-	0.55	0.75	2	18.5	8	25	565×210×340	26	23	720
WQDS7-7-0.55A	-	-	0.55	0.75	2	19	8.5	43	565×210×340	26	23	720
WQDS10-7-0.75	-	-	0.75	1	2	21	8.5	25	605×210×340	28	25	720
WQDS10-7-0.75A	-	-	0.75	1	2	21	9.5	43	605×210×340	28	25	720
WQDS10-10-1.1	-	-	1.1	1.5	2	24	11	25	605×210×340	31	27	700
WQDS10-10-1.1A	-	-	1.1	1.5	2	27	12	45	605×210×340	31	27	660
WQDS15-10-1.5	-	-	1.5	2	2	28	13.5	35	625×210×325	33	29	625
WQDS15-9-1.1CB	-	-	1.1	1.5	2	24	12.5	20	635×230×345	31	27	660
WQDS25-7-1.5CB	-	-	1.5	2	2	31	16	20	635×230×345	33	29	625
WQXD3-7-0.55	-	-	0.55	0.75	1.5	11.5	8.8	35	475×180×260	16	13	1240
-	-	WQS10-7-0.75A	0.75	1	2	21	9	43	625×210×325	28	25	625
-	-	WQS10-10-1.1	1.1	1.5	2	28	12.5	28	625×210×325	31	27	640
-	-	WQS15-10-1.5	1.5	2	2	30	13.5	25	625×210×325	33	29	580
-	-	WQS10-9-0.75CB	0.75	1	2	20	11	20	605×210×340	28	25	720
-	-	WQS15-9-1.1CB	1.1	1.5	2	25	12	20	635×230×345	31	27	640
-	-	WQS25-7-1.5CB	1.5	2	2	40	14	20	635×230×345	32	28	580

Model	Voltage (V)	Frequency (Hz)	Power		Outlet (Inch)	Max. Flow (m³/h)	Max. Head (m)	The max. flow particle (mm)	Dim. (mm)	Weight (kg)		20' Loading Qty (pcs)
			kW	HP						G.W.	N.W.	
QT25	220	50	0.37	0.5	2	10	10	7	230×160×310	12	11	1700
	220	60	0.37	0.5	2	10	10	7	230×160×310	12	11	1700
	120	60	0.37	0.5	2	10	10	7	230×160×310	12	11	1700
QT37	220	50	0.55	0.75	2	17	12	7	230×160×310	13	12	1600
	220	60	0.55	0.75	2	17	12	7	230×160×310	13	12	1600
	120	60	0.55	0.75	2	17	12	7	230×160×310	13	12	1600

WVS(D)-(F)/WQ(D)AS

SEWAGE PUMP



WVS(D)

WVS(D)A2(F)



WQ(D)AS

Technical Data

RPM: n=2850 r/min(50HZ); n=3450 r/min (60HZ)

Model		Power		Outlet (Inch)	Max. Flow (m³/h)	Max. Head (m)	the max. flow particle (mm)	Dim. (mm)	G.W. (kg)	N.W. (kg)	20' (Loading Qty) (pcs)
Single-Phase	Three-Phase	kW	HP								
WVSD55(F)(220V-240V/50Hz)	-	0.55	0.75	2	18	10	35	490x200x280	16.5	16	1000
WVSD55(F)(220V-240V/60Hz)	-	0.55	0.75	2	18	10	35	490x200x280	16.5	16	1000
WVSD55(F)(115V-127V/60Hz)	-	0.55	0.75	2	18	10	35	490x200x280	16.5	16	1000
WVSD75(F)(220V-240V/50Hz)	-	0.75	1	2	21	12	35	510x200x280	18.5	18	960
WVSD75(F)(220V-240V/60Hz)	-	0.75	1	2	21	12	35	510x200x280	18.5	18	960
WVSD75(F)(115-127V/60Hz)	-	0.75	1	2	21	12	35	510x200x280	18.5	18	960
WVSD110(F)(220V-240V/50Hz)	-	1.1	1.5	2	27	13	40	515x210x305	22.5	22	840
WVSD110(F)(220V-240V/60Hz)	-	1.1	1.5	2	27	13	40	515x210x305	22.5	22	840
-	WVS75(380V-400V/50Hz)	0.75	1	2	21	12	35	510x200x280	18	17.5	960
-	WVS75(220V-240V/60Hz)	0.75	1	2	21	12	35	510x200x280	18	17.5	960
-	WVS75(440V-460V/60Hz)	0.75	1	2	21	12	35	510x200x280	18	17.5	960
-	WVS110(380V-400V/50Hz)	1.1	1.5	2	27	13	40	515x210x305	20.5	20	840
-	WVS110(220V-240V/60Hz)	1.1	1.5	2	27	13	40	515x210x305	20.5	20	840
-	WVS110(440V-460V/60Hz)	1.1	1.5	2	27	13	40	515x210x305	20.5	20	840
WQDAS10-7.0.75CB	-	0.75	1	2	20	11	20	630x220x290	37	33	630
WQDAS15-9-1.1CB	-	1.1	1.5	2	25	13	20	530x220x275	38	35	550
WQDAS25-7-1.5CB	-	1.5	2	2.5	33	13.5	25	590x260x315	47	43	440
WQDAS25-10-2.2CB	-	2.2	3	2.5	42	16	25	590x260x315	53	49	370
-	WQAS10-7.0.75CB	0.75	1	2	20	11	20	530x220x275	33	30	630
-	WQAS15-9-1.1CB	1.1	1.5	2	25	13	20	530x220x275	35	32	600
-	WQAS25-7-1.5CB	1.5	2	2.5	33	13.5	25	590x260x315	44	40	470
-	WQAS25-10-2.2CB	2.2	3	2.5	42	16	25	590x260x315	50	46	420
-	WQAS42-11-3CB	3	4	3	70	19.5	30	680x335x385	73	68	270
-	WQAS50-10-4CB	4	5.5	3	75	21	30	680x335x385	75	68	250
-	WQAS65-12-5.5CB	5.5	7.5	4	95	23	30	755x360x435	116	106	180
-	WQAS85-13-7.5CB	7.5	10	4	124	31	35	785x360x435	125	115	160
WVSD55A2(F)(220V-240V/50Hz)	-	0.55	0.75	2	18	11	10	490x200x280	16.5	16	1000
WVSD55A2(F)(220V-240V/60Hz)	-	0.55	0.75	2	18	11	10	490x200x280	16.5	16	1000
WVSD55A2(F)(115V-127V/60Hz)	-	0.55	0.75	2	18	11	10	490x200x280	16.5	16	1000
WVSD75A2(F)(220V-240V/50Hz)	-	0.75	1	2	20	15	10	510x200x280	18.5	18	960
WVSD75A2(F)(220V-240V/60Hz)	-	0.75	1	2	20	15	10	510x200x280	18.5	18	960
WVSD75A2(F)(115V-127V/60Hz)	-	0.75	1	2	20	15	10	510x200x280	18.5	18	960
-	WVS75A2(380V-440V/50Hz)	0.75	1	2	20	15	10	510x200x280	18.5	18	960
-	WVS75A2(220V-240V/60Hz)	0.75	1	2	20	15	10	510x200x280	18.5	18	960

SEWAGE PUMP

WQ(D)/WQ



WQ(D)

WQ

Technical Data

RPM: n=2850 r/min(50HZ); n=3450 r/min (60HZ)

Model		Power		Outlet (Inch)	Max. Flow (m³/h)	Max. Head (m)	The max. flow particle (mm)	Dim. (mm)	Weight (kg)		20' (Loading Qty) (pcs)
Single-Phase	Three-Phase	kW	HP						G.W.	N.W.	
WQD6-12-0.55	-	0.55	0.75	2	16	14	20	470x250x250	20.5	19	950
WQD6-16-0.75	-	0.75	1	2	22	17.5	20	470x250x250	22.5	21	850
WQD10-10-0.75	-	0.75	1	2.5	16	16	20	520x210x275	29	26	910
WQD15-9-1.1	-	1.1	1.5	2	24	14.5	20	540x240x280	32	29	650
WQD7-15-1.1	-	1.1	1.5	2	22	18	20	540x240x280	31	28	620
-	WQ6-16-0.75	0.75	1	2	22	17.5	20	470x250x250	21.5	20	930
-	WQ10-10-0.75	0.75	1	2.5	16	16	20	520x210x275	29	26	910
-	WQ15-9-1.1	1.1	1.5	2	24	14.5	20	540x240x280	32	29	650
-	WQ7-15-1.1	1.1	1.5	2	22	18	20	540x240x280	31	28	650
-	WQ18-15-1.5	1.5	2	2.5	41	20	20	610x260x305	46	41	550
-	WQ25-7-1.5	1.5	2	3	37	14.5	25	610x260x305	39	35	550
-	WQ9-22-2.2	2.2	3	2	32	25.6	20	635x260x330	47	42	450
-	WQ15-20-2.2	2.2	3	2.5	34	24	20	635x260x330	49	44	440
-	WQ25-15-2.2	2.2	3	3	52	19	20	635x260x330	49	44	440
-	WQ42-9-2.2	2.2	3	2.5	52	19	25	655x270x325	51	46	440
-	WQ15-30-3	3	4	2.5	34	33.5	25	635x260x330	53	48	400
-	WQ25-20-3	3	4	3	46	25	25	635x260x330	54	49	380
-	WQ43-13-3	3	4	4	75	21	25	720x320x390	68	61	320
-	WQ50-10-3	3	4	4	88	19	25	720x320x390	68	61	320
-	WQ40-15-4	4	5.5	2.5	92	22	25	755x325x395	81	73	260
-	WQ65-20-7.5	7.5	10	4	140	27	30	395x395x1100	128	115	150
-	WQ80-15-7.5	7.5	10	4	140	27	30	395x395x1100	128	115	130
-	WQ100-10-7.5	7.5	10	6	140	27	30	395x395x1100	131	118	130

WQ(D)-B/WQ(D)H1

SEWAGE PUMP

WQ(D)-B



WQ(D)H1



Technical Data

RPM: n=2850 r/min(50HZ); n=3450 r/min (60HZ)

Model	Power		Outlet (Inch)	Max. Flow (m³/h)	Max. Head (m)	The max. flow particle (mm)	Dim. (mm)	G.W. (kg)	N.W. (kg)	20' Loading Qty (pcs)	
	Single-Phase	Three-Phase									kW
WQD6-12-0.55B	-	0.55	0.75	2	16	14	20	425×230×215	19	18	1100
WQD6-16-0.75B	-	0.75	1	2	22	17.5	20	425×230×215	22	21	1100
WQD10-10-0.75B	-	0.75	1	2	16	16	20	425×230×215	21	20	1100
WQD15-9-1.1B	-	1.1	1.5	2	24	14.5	20	550×245×295	30	27	650
WQD7-15-1.1B	-	1.1	1.5	2	22	18	20	550×245×295	31	28	650
-	WQ6-16-0.75B	0.75	1	2	22	17.5	20	425×230×215	21	20	1100
-	WQ10-10-0.75B	0.75	1	2	16	16	20	425×230×215	20	19	1100
-	WQ15-7-0.75B	0.75	1	2.5	18	17	20	425×230×215	20	19	1100
-	WQ15-9-1.1B	1.1	1.5	2	24	14.5	20	550×245×295	28	25	650
-	WQ7-15-1.1B	1.1	1.5	2	22	18	20	550×245×295	30	27	650
-	WQ25-7-1.1B	1.1	1.5	2.5	37	14.5	25	550×245×295	29	26	650
-	WQ12-15-1.5B	1.5	2	2	34	19.5	20	550×245×295	31	28	650
-	WQ18-15-1.5B	1.5	2	2.5	41	20	20	550×245×295	31	28	650
-	WQ25-10-1.5B	1.5	2	2.5	41	20	25	550×245×295	30	27	650
-	WQ9-22-2.2B	2.2	3	2	32	25.6	20	630×285×345	46	42	500
-	WQ15-20-2.2B	2.2	3	2.5	34	24	20	630×285×345	46	42	500
-	WQ25-15-2.2B	2.2	3	3	52	19	25	630×285×345	49	45	500
-	WQ35-7-2.2B	2.2	3	3	45	14.5	25	630×285×345	49	45	500
-	WQ42-9-2.2B	2.2	3	3	52	19	25	630×285×345	49	45	500
-	WQ15-30-3B	3	4	2.5	34	33.5	25	680×285×345	59	54	380
-	WQ20-22-3B	3	4	3	34	25.5	25	680×285×345	59	55	380
-	WQ25-20-3B	3	4	3	46	25	25	680×285×345	59	55	380
-	WQ43-13-3B	3	4	4	75	21	25	700×310×370	65	60	380
-	WQ50-10-3B	3	4	4	72	13	25	700×310×370	65	60	380
-	WQ40-15-4B	4	5.5	4	92	22	25	745×345×415	73	68	300
-	WQ60-10-4B	4	5.5	4	95	19	25	745×345×415	73	68	300
-	WQ15-40-5.5B	5.5	7.5	2.5	54	42.5	25	750×340×380	88	82	250
-	WQ30-30-5.5B	5.5	7.5	3	42	37	25	750×340×380	96	90	250
-	WQ65-15-5.5B	5.5	7.5	4	116	26.5	30	810×340×410	96	90	250
-	WQ45-22-7.5B	7.5	10	3	140	27	30	845×355×415	109	102	200
-	WQ65-20-7.5B	7.5	10	4	140	27	30	845×355×415	109	102	200
-	WQ80-15-7.5B	7.5	10	4	140	27	30	845×355×415	109	102	200
-	WQ100-10-7.5B	7.5	10	4	140	27	30	845×355×415	109	102	200

Model	Power		Outlet Inch(Tube)	Max. Flow (m³/h)	Max. Head (m)	The max. flow particle (mm)	Dim. (mm)	Weight (kg)		20' (Loading Qty)	
	Single-Phase	Three-Phase						kW	HP		G.W.
WQD4-10-0.55H1	-	0.55	0.75	2	15	15	13	410×285×200	-	28	710
WQD5-15-0.75H1	-	0.75	1	2	15	19	13	430×285×200	-	29	690
WQD10-7-0.75H1	-	0.75	1	2(2.5)	16	14	20	440×280×200	-	30	670
WQD10-10-1.1H1	-	1.1	1.5	2(2.5)	23	15	20	455×280×200	-	31.5	640
WQD7-15-1.1H1	-	1.1	1.5	2(2.5)	22	22	17	455×280×200	-	32	625
WQD15-7-1.1H1	-	1.1	1.5	2(2.5)	23	15	20	455×280×200	-	31.5	640
-	WQ5-15-0.75H1	0.75	1	2	14	20	13	415×270×200	-	26.5	760
-	WQ10-7-0.75H1	0.75	1	2(2.5)	22	14	20	425×280×200	-	27.5	750
-	WQ10-10-1.1H1	1.1	1.5	2(2.5)	23	15	20	445×280×200	-	29.5	680
-	WQ7-15-1.1H1	1.1	1.5	2(2.5)	22	22	17	445×280×200	-	30	670
-	WQ15-7-1.1H1	1.1	1.5	2(2.5)	23	15	20	445×280×200	-	29.5	680
-	WQ25-7-1.5H1	1.5	2.2	2(2.5)	31	14	30	500×285×245	-	40.5	500
-	WQ15-10-1.5H1	1.5	2.2	2(2.5)	31	14	30	500×285×245	-	40	495
-	WQ10-15-1.5H1	1.5	2.2	2(2.5)	25	21	18	485×275×245	-	40.5	500
-	WQ9-22-2.2H1	2.2	3	2(2.5)	28	28	18	515×275×245	-	44.5	450
-	WQ15-15-2.2H1	2.2	3	2(2.5)	28	28	18	515×275×245	-	44.5	450
-	WQ25-10-2.2H1	2.2	3	2(2.5)	35	18	30	530×285×245	-	45	450
-	WQ35-7-2.2H1	2.2	3	3	61	14	36	535×290×250	-	45.5	440

SEWAGE PUMP

WQ/WQ-multistage



Technical Data

RPM: n=2850 r/min(50HZ); n=1450 r/min (50HZ)

Model	Power		Outlet (Inch)	Max. Flow (m³/h)	Max. Head (m)	The max. flow particle (mm)	Dim. (mm)	G.W. (kg)	N.W. (kg)	20' (Loading Qty) (pcs)
	Three-Phase	kW								
WQ100-25-11	11	15	4	185	30	35	600×560×1230	253	238	80
WQ130-15-11	11	15	6	335	23	45	590×500×1290	256	241	80
WQ180-11-11	11	15	6	300	20	50	590×500×1290	253	238	80
WQ300-7-11	11	15	8	440	13.5	55	660×570×1380	381	266	55
WQ100-30-15	15	20	4	220	40	35	600×560×1230	270	255	75
WQ180-15-15	15	20	6	350	25	50	590×500×1290	268	253	75
WQ250-11-15	15	20	8	405	19	50	660×570×1380	298	283	70
WQ100-35-18.5	18.5	25	4	240	42	35	690×600×1300	338	323	60
WQ180-20-18.5	18.5	25	6	410	30	45	640×570×1350	356	341	55
WQ250-15-18.5	18.5	25	8	440	23.5	50	660×610×1450	372	357	55
WQ100-40-22	22	30	4	250	46	35	690×600×1300	351	336	60
WQ180-25-22	22	30	6	425	35	45	640×570×1350	366	351	55
WQ250-18-22	22	30	8	460	31	50	660×610×1450	377	362	55
WQ20-75/3-9.2	9.2	12.5	2	39	87	10	1110×436×498	185	175	200
WQ20-90/3-11	11	15	2	40	105	10	1110×436×498	200	190	200
WQ20-120/4-15	15	20	2	40	138	10	1250×436×498	231	220	180
WQ20-150/5-18.5	18.5	25	2	41	175	10	1370×436×498	262	250	163
WQ20-180/6-22	22	30	2	42	210	10	1500×436×498	293	280	148

WQK/DWE

SEWAGE PUMP



Technical Data

RPM: n=2850 r/min(50HZ); n=3450 r/min (60HZ)

Model	Power		Outlet (Inch)	Max. Flow (m³/h)	Max. Head (m)	The max. flow particle (mm)	Dim. (mm)	G.W. (kg)	N.W. (kg)	20' (Loading Qty)
	kW	HP								
Three-Phase										
WQK9.6-10-0.75	0.75	1	2	20	14	20	525×250×280	31	27	680
WQK15-12-1.5	1.5	2	2	30	18	20	585×245×300	40	36	570
WQK18-15-2.2	2.2	3	3	60	20	20	585×260×330	45	40	500
WQK30-18-3.7	3.7	5	3	65	21	30	370×325×680	71	65	250
WQK36-22-5.5	5.5	7.5	4	90	28.5	30	400×340×770	85	78	210
WQK48-25-7.5	7.5	10	4	100	33	30	400×340×770	91	84	190
WQK9.6-12-0.75	0.75	1	2	21	15	20	525×250×280	31	27	500
WQK15-15-1.5	1.5	2	2	30	20	20	600×255×305	45	40	430
WQK18-20-2.2	2.2	3	3	60	24	20	600×275×340	57	51	340
WQK30-20-3.7	3.7	5	3	80	28	30	370×325×680	72	66	250
WQK36-25-5.5	5.5	7.5	4	90	30	30	400×340×770	86	79	210
WQK48-30-7.5	7.5	10	4	110	40	30	400×340×770	92	85	190

Model	Power		Vol./Hz	Outlet (Inch)	Max. Flow (m³/h)	Max. Head (m)	The max. flow particle (mm)	Dim. (mm)	Weight (kg)	20' (Loading Qty)
	Single-Phase	Three-Phase								
DWE-04M(F)	-	0.4	1/2	2	15	10	15	445×205×260	18	1200
DWE-08M(F)	-	0.75	1	2	19	14	20	510×205×225	28.5	730
-	DWE-08B	0.75	1	2	19	15	10	500×255×290	28	750
-	DWE-15B	1.5	2	2	29	22	10	525×255×290	32	650
-	DWE-22B	2.2	3	3	39	26	12	560×260×310	38	550
-	DWE-37B	3.7	5	3	48	30	12	590×260×310	42	500
-	DWE-55B	5.5	7 1/2	3(4)	74	30	14	700×300×360	64	320
-	DWE-75B	7.5	10	4(3)	90	33	14	745×300×370	74	280
-	DWE-08C	0.75	1	2	18	15	15	500×255×290	28	750
-	DWE-15C	1.5	2	2	30	18	25	525×255×290	32	650
-	DWE-22C	2.2	3	3	44	26	25	560×260×310	38	550
-	DWE-37C	3.7	5	3	49	29	25	590×260×310	42	500
-	DWE-08V	0.75	1	2	21	13	20	450×215×255	25	840
-	DWE-15V	1.5	2	2	27	17	22	475×215×255	29	720
-	DWE-22V	2.2	3	3	38	19	25	555×235×285	37	550
-	DWE-37V	3.7	5	3	40	25	25	585×235×285	41	510
-	DWE-55V	5.5	7 1/2	3(4)	65	25	30	765×300×360	68	300
-	DWE-75V	7.5	10	4(3)	70	28	30	800×300×370	78	260
-	DWE110B	11	15	4	100	43	14	320×380×751	133	160
-	DWE150B	15	20	4	110	53	14	320×380×751	140	150

Summary of Deep Well Pumps

Application

Series	Well pumping	River pumping	Agricultural irrigation	Garden irrigation	Drainage in breeding industry	Domestic use	Min.well diameter
3SGm	√	√	√	√	√	√	3"
3.5SGm	√	√	√	√	√	√	3.5"
90QJDY	√	√	√	√	√	√	3.5"
4SG(m)	√	√	√	√	√	√	4"
4ST(m)	√	√	√	√	√	√	4"
4SS(m)	√	√	√	√	√	√	4"
QJ(D)Y	√	√	√	√	√	√	4"
QJD	√	√	√	√	√	√	4"
QJD-C	√	√	√	√	√	√	4"
4SK(m)	√	√	√	√	√	√	4"
NK(m)	√	√	√	√	√	√	5"
6SG	√	√	√	√	√	√	6"
QG(D)	√	√	√	√	√	√	-

Operating Conditions

Series	Submersible depth	Max. liquid temp.	Max. ambient temp.	Max. sand content	Max. working pressure
3SGm	70m	+40°C	+40°C	150g/m³	10 bar
3.5SGm	70m	+40°C	+40°C	150g/m³	10 bar
90QJDY	70m	+40°C	+40°C	150g/m³	10 bar
4SG(m)	70m	+40°C	+40°C	150g/m³	10 bar
4ST(m)	70m	+40°C	+40°C	150g/m³	10 bar
4SS(m)	70m	+40°C	+40°C	150g/m³	10 bar
QJ(D)Y	70m	+40°C	+40°C	150g/m³	10 bar
QJD	15m	+40°C	+40°C	150g/m³	10 bar
QJD-C	15m	+40°C	+40°C	150g/m³	10 bar
4SK(m)	70m	+35°C	+40°C	150g/m³	10 bar
NK(m)	20m	+40°C	+40°C	150g/m³	10 bar
6SG	70m	+40°C	+40°C	150g/m³	10 bar
QG(D)	15m	+40°C	+40°C	150g/m³	14 bar

Motor & Pump

Series	Pole	Insulation	Protection	Thermal protection	Cooper winding	Outlet
3SGm		Class B	IP X8	√	√	1"
3.5SGm		Class B	IP X8	√	√	1"
90QJDY		Class B	IP X8	√	√	1.5"
4SG(m)		Class B	IP X8	single phase √	√	1.25"/1.5"/2"
4SS(m)	2 pole	Class B	IP X8	single phase √	√	1.25"/1.5"/2"
QJ(D)Y	induction	Class B	IP X8	single phase √	√	1.5"
QJD	motor	Class B	IP X8	√	√	1.5"
QJD-C	(50hz/	Class B	IP X8	√	√	1.5"
4SK(m)	60hz)	Class B	IP X8	single phase √	√	1"
NK(m)		Class B	IP X8	single phase √	√	1.25"
6SG		Class B	IP X8	√	√	3"
QG(D)		Class E	IP X8	single phase √	√	1"
4ST(m)	60hz	Class B	IP X8	single phase √	√	1.5"

Material

Series	Delivery outlet	Pump body & Motor bracket	Impeller	Filter	Shaft with rotor	Mechanical seal
3SGm	Brass	SS	POM	SS	SS	Graphite/Silicon-carbide
3.5SGm	Brass	SS	POM	SS	SS	Graphite/Silicon-carbide
90QJDY	Cast iron with electrophoretic paint	SS	POM	SS	CS45#	Graphite/Silicon-carbide
4SG(m)	Brass	SS	POM	SS	SS	Silicon carbide-Tungsten carbide
QJ(D)Y	Brass	SS	POM	SS	SS	Silicon carbide-Tungsten carbide
4SS(m)	Cast iron with electrophoretic paint	SS	POM	SS	SS	Silicon carbide-Tungsten carbide
QJD	Cast iron with electrophoretic paint	SS	POM	SS	SS	Silicon carbide-Tungsten carbide
QJD-C	Cast iron with electrophoretic paint	Steel	POM	SS	CS40Cr	Silicon carbide-Tungsten carbide
4SK(m)	Cast iron with electrophoretic paint	SS	POM	SS	SS	Ceramic/Graphite
4ST(m)	Brass/Cast iron	SS	Brass	SS	SS	Ceramic/Graphite
NK(m)	SS	SS	Nylon/SS/PPO	SS	SS	Ceramic/Graphite
6SG	Cast iron with electrophoretic paint	SS	POM	SS	SS	Silicon carbide-Tungsten carbide
QG(D)	-	Cast iron or SS	-	-	SS420 or CS45#	-

3SGm/3.5SGm1/3 /4SG(m)2/3 DEEP WELL PUMP



Technical Data DN: 1" RPM: n=2850 r/min

Model	Power		Flow												Dim. (mm)	G.W. (kg)	
	Single-Phase kW	HP	m ³ /h l/min	H(m)												G(s)	G(t)
				0	0.3	0.6	0.9	1.2	1.5	1.8	2.1	2.4	2.7	3			
3SGm2/7	0.18	0.25	29	29	28	27	26	24	21	18	14	10	6	910x100x200	6.5		
3SGm2/10	0.25	0.33	42	41	41	39	37	34	30	26	21	15	9	1000x100x200	7.5		
3SGm2/14	0.37	0.5	59	57	57	55	52	48	42	36	29	20	13	1140x100x200	9		
3SGm2/20	0.55	0.75	84	82	81	78	74	68	60	52	41	29	18	1320x100x200	11		
3SGm2/27	0.75	1	113	111	109	105	100	92	81	70	55	39	24	1830x100x200	13		
3SGm2/33	1.1	1.5	139	135	134	129	122	112	99	86	68	48	30	1750x100x200	15.5		

Model	Power		Flow												Dim. (mm)	G.W. (kg)	
	Single-Phase kW	HP	m ³ /h l/min	H(m)												G(s)	G(t)
				0	0.3	0.6	0.9	1.2	1.5	1.8	2.1						
3.5SGm1/9	0.37	0.5	54	51	45	36	26	18	11	10	945x200x115	14.5					
3.5SGm1/12	0.55	0.75	74	71	66	54	44	32	20	17	1085x200x115	16.5					
3.5SGm1/18	0.75	1	107	98	88	74	58	40	24	20	1265x200x115	19					
3.5SGm1/22	1.1	1.5	131	122	106	88	71	50	31	27	1425x200x115	20.5					
3.5SGm1/26	1.5	2	158	148	134	111	88	64	40	31	1560x200x115	24.5					

Model	Power		Flow												Dim. (mm)	G.W. (kg)	
	Single-Phase kW	HP	m ³ /h l/min	H(m)												G(s)	G(t)
				0	0.6	1.2	1.8	2.4	3	3.6	4.2	4.8	5.4	6			
3.5SGm3/8	0.37	0.5	36	34	33	31	30	28	25	22	19	14	9	820x180x110	11.5		
3.5SGm3/10	0.55	0.75	45	43	41	39	38	35	32	28	23	18	12	910x180x110	12.5		
3.5SGm3/12	0.75	1	54	51	49	47	45	42	38	33	28	21	14	1010x180x110	14.5		
3.5SGm3/14	0.9	1.2	63	60	57	55	53	49	44	39	33	25	16	1090x180x110	15.5		
3.5SGm3/18	1.1	1.5	81	77	74	71	68	63	57	50	42	32	21	1240x180x110	17		
3.5SGm3/25	1.5	2	113	106	102	98	94	88	79	69	58	44	29	1560x180x110	21.5		

Technical Data DN: 1.25" RPM: n=2850 r/min

Model	Power		Delivery (m ³ /h)								Dim. (mm)		G.W. (kg)		
	Single-Phase kW	HP	Q(m ³ /h) l/min	H(m)								Single-Phase G(s)	Three-Phase G(t)		
				0	0.6	1.2	1.8	2.4	3	3.6	4.2				
4SGm2/8	-	0.37	0.5	51	47	45	42	36	26	15	-	900x200x115	-	15	-
4SGm2/11	-	0.55	0.75	70	65	62	57	49	36	20	-	1030x200x115	-	17	-
4SGm2/14	4SG2/14	0.75	1	90	83	79	72	62	45	26	-	1140x200x115	900x200x115	19	19
4SGm2/20	4SG2/20	1.1	1.5	128	119	113	103	89	64	37	-	1320x200x115	1140x200x115	23	23
4SGm2/25	4SG2/25	1.5	2	160	149	141	129	111	80	46	-	1510x200x115	1265x200x115	30	28
4SGm2/36	4SG2/36	2.2	3	230	214	203	185	159	115	66	-	1920x200x115	1625x200x115	37	35
4SGm3/7	-	0.37	0.5	47	43	41	38	33	26	18	-	900x200x115	-	15	-
4SGm3/10	-	0.55	0.75	68	62	59	54	47	38	25	12	990x200x115	-	16	-
4SGm3/13	4SG3/13	0.75	1	88	80	76	70	61	49	33	15	1085x200x115	900x200x115	19	19
4SGm3/18	4SG3/18	1.1	1.5	122	110	105	97	85	68	46	21	1320x200x115	1085x200x115	22	22
4SGm3/24	4SG3/24	1.5	2	162	149	140	129	113	90	61	28	1510x200x115	1265x200x115	27	25
4SGm3/32	4SG3/32	2.2	3	216	198	187	172	150	120	81	37	1810x200x115	1560x200x115	34	32

DEEP WELL PUMP

4SG(m)4/6/8/10

Technical Data DN:1.25"(4m³/h), 1.5" (6m³/h) RPM: n=2850 r/min

Model	Power		Flow								Dim. (mm)		G.W. (kg)	
	Single-Phase kW	HP	m ³ /h l/min	H(m)								Single-Phase G(s)	Three-Phase G(t)	
				0	1.2	2.4	3.6	4.8	6	7.2				
4SGm4/6	-	0.37	0.5	43	38	35	27	15	-	-	900x200x115	-	14	-
4SGm4/8	-	0.55	0.75	57	51	46	36	20	-	-	990x200x115	-	16	-
4SGm4/10	4SG4/10	0.75	1	71	64	58	45	25	-	-	1085x200x115	900x200x115	17	17
4SGm4/14	4SG4/14	1.1	1.5	100	90	81	63	35	-	-	1320x200x115	1085x200x115	20	20
4SGm4/18	4SG4/18	1.5	2	129	115	104	81	45	-	-	1510x200x115	1265x200x115	25	25
4SGm4/25	4SG4/25	2.2	3	179	160	144	113	62	-	-	1810x200x115	1560x200x115	31	28
-	4SG4/32	3	4	229	205	185	145	80	-	-	M:575x130x140	P:1425x130x140	M:16	P:12.5
-	4SG4/42	4	5.5	300	269	242	190	104	-	-	M:620x130x140	P:1810x130x140	M:18.5	P:14
4SGm6/7	-	0.55	0.75	45	43	39	35	29	22	11	990x200x115	-	16	-
4SGm6/9	4SG6/9	0.75	1	57	55	51	45	38	28	14	1140x200x115	900x200x115	18	17
4SGm6/12	4SG6/12	1.1	1.5	77	74	68	60	50	37	19	1320x200x115	1085x200x115	21	20
4SGm6/16	4SG6/16	1.5	2	102	98	90	80	67	50	25	1510x200x115	1265x200x115	24	22
4SGm6/21	4SG6/21	2.2	3	134	129	118	105	88	65	33	1810x200x115	1560x200x115	27	25
-	4SG6/27	3	4	172	165	152	135	113	84	42	M:575x130x140	P:1690x130x140	M:16	P:12
-	4SG6/36	4	5.5	229	220	203	180	150	112	56	M:620x130x140	P:1810x130x140	M:18.5	P:13.5

Technical Data DN: 2" RPM: n=2850 r/min

Model	Power		Flow												Dim. (mm)		G.W. (kg)	
	Single-Phase kW	HP	m ³ /h l/min	H(m)												Single-Phase G(s)	Three-Phase G(t)	
				0	1.2	2.4	3.6	4.8	6	7.2	8.4	9.6	10.8	12				
4SGm8/7	4SG8/7	0.75	1	43	41	39	37	34	30	25	19	12	-	1030x200x115	820x200x115	18	17	
4SGm8/9	4SG8/9	1.1	1.5	55	53	50	47	43	38	32	24	15	-	1140x200x115	945x200x115	20	19	
4SGm8/12	4SG8/12	1.5	2	74	71	67	63	58	51	43	33	20	-	1370x200x115	1140x200x115	23	21	
4SGm8/17	4SG8/17	2.2	3	104	100	95	89	82	73	61	46	28	-	1625x200x115	1370x200x115	27	25	
-	4SG8/22	3	4	135	129	122	115	105	94	79	60	36	-	M:575x130x140	P:1190x130x140	M:16	P:11	
-	4SG8/29	4	5.5	178	170	161	151	139	124	104	79	47	-	M:620x130x140	P:1510x130x140	M:18.5	P:12.5	
-	4SG8/38	5.5	7.5	234	223	211	198	182	162	136	103	62	-	M:700x130x140	P:1865x130x140	M:21	P:14.5	
4SGm10/6	4SG10/6	0.75	1	37	36	35	34	33	31	29	26	22	18	1030x200x115	820x200x115	18	17	
4SGm10/8	4SG10/8	1.1	1.5	49	48	47	45	43	41	38	34	30	24	1140x200x115	945x200x115	20	19	
4SGm10/10	4SG10/10	1.5	2	62	61	59	57	54	51	48	43	37	30	1320x200x115	1085x200x115	23	21	
4SGm10/14	4SG10/14	2.2	3	86	85	82	79	76	72	67	60	52	42	1560x200x115	1320x200x115	27	25	
-	4SG10/18	3	4	111	109	106	102	97	92	86	77	67	54	M:575x130x140	P:1140x130x140	M:16	P:11	
-	4SG10/23	4	5.5	142	139	135	130	124	118	109	99	85	69	M:620x130x140	P:1370x130x140	M:18.5	P:12.5	
-	4SG10/31	5.5	7.5	191	188	182	175	168	159	147	133	115	93	M:700x130x140	P:1810x130x140	M:21	P:14	
-	4SG10/40	7.5	10	247	242	235	226	216	205	190	172	148	120	M:780x130x140	P:2160x130x140	M:25.5	P:16	

90QJ(D)Y/QJ(D)Y2/4/6

DEEP WELL PUMP

Technical Data

DN: 1.5" RPM: n=2850 r/min

Model	Power		Flow							Dim. (mm)	G.W. (kg)	
	kW	HP	m³/h	0	0.3	0.6	0.9	1.2	1.5		1.8	G(s)
90QJY1/9-0.37	0.37	0.5	54	51	45	36	26	18	11	760×180×110	11.5	
90QJY1/12-0.55	0.55	0.75	74	71	66	54	44	32	20	885×180×110	12.5	
90QJY1/18-0.75	0.75	1	107	98	88	74	58	40	24	1055×180×110	14.5	
90QJY1/20-0.9	0.9	1.2	119	110	97	81	64	45	27	1110×180×110	15.5	
90QJY1/22-1.1	1.1	1.5	131	122	106	88	71	50	31	1170×180×110	17	
90QJY1/26-1.5	1.5	2	158	148	134	111	88	64	40	1310×180×110	21.5	

Model	Power		Flow						Dim. (mm)	G.W. (kg)	
	kW	HP	m³/h	0	1.2	2.4	3.6	4.8		6	G(s)
90QJY3/8-0.37	0.37	0.5	35	31	27	22	15	7	820×180×110	11.5	
90QJY3/10-0.55	0.55	0.75	43	38	34	27	19	8	910×180×110	12.5	
90QJY3/12-0.75	0.75	1	52	46	41	34	23	10	1010×180×110	14.5	
90QJY3/14-0.9	0.9	1.2	60	54	47	38	27	12	1090×180×110	15.5	
90QJY3/18-1.1	1.1	1.5	78	69	61	49	34	16	1240×180×110	17	
90QJY3/25-1.5	1.5	2	108	96	85	68	48	22	1560×180×110	21.5	

Model	Power		Flow					Dim. (mm)		G.W. (kg)				
	Single-Phase	Three-Phase	kW	HP	m³/h	0	1.2	2.4	3.6	4.8	Single-Phase	Three-Phase	G(s)	G(t)
QJY2/6	-	-	0.37	0.5	43	38	35	27	15	740×200×115	-	-	14	-
QJY2/8	-	-	0.55	0.75	57	51	46	36	20	820×200×115	-	-	16	-
QJY2/10	QJY2/10	0.75	1	71	64	58	45	25	900×200×115	900×200×115	17	17		
QJY2/14	QJY2/14	1.1	1.5	100	90	81	63	35	1320×200×115	1085×200×115	20	20		
QJY2/18	QJY2/18	1.5	2	129	115	104	81	45	1510×200×115	1265×200×115	25	25		
QJY2/25	QJY2/25	2.2	3	179	160	144	113	62	1810×200×115	1560×200×115	31	28		
-	QJY2/32	3	4	229	205	185	145	80	M:575×130×140	P:1425×130×140	M:16	P:17.5		
-	QJY2/42	4	5.5	300	269	242	190	104	M:620×130×140	P:1810×130×140	M:18.5	P:20.5		

Model	Power		Flow								Dim. (mm)		G.W. (kg)			
	Single-Phase	Three-Phase	kW	HP	m³/h	0	1.2	2.4	3.6	4.8	6	7.2	Single-Phase	Three-Phase	G(s)	G(t)
QJY4/6	-	-	0.37	0.5	43	38	35	27	15	-	-	-	740×200×115	-	14	-
QJY4/8	-	-	0.55	0.75	57	51	46	36	20	-	-	-	820×200×115	-	16	-
QJY4/10	QJY4/10	0.75	1	71	64	58	45	25	-	-	-	900×200×115	900×200×115	17	17	
QJY4/14	QJY4/14	1.1	1.5	100	90	81	63	35	-	-	-	1320×200×115	1085×200×115	20	20	
QJY4/18	QJY4/18	1.5	2	129	115	104	81	45	-	-	-	1510×200×115	1265×200×115	25	25	
QJY4/25	QJY4/25	2.2	3	179	160	144	113	62	-	-	-	1810×200×115	1560×200×115	31	28	
-	QJY4/32	3	4	229	205	185	145	80	-	-	-	M:575×130×140	P:1425×130×140	M:16	P:12.5	
-	QJY4/42	4	5.5	300	269	242	190	104	-	-	-	M:620×130×140	P:1810×130×140	M:18.5	P:14	
QJY6/7	-	0.55	0.75	45	43	39	35	29	22	11	820×200×115	-	16	-		
QJY6/9	QJY6/9	0.75	1	57	55	51	45	38	28	14	900×200×115	900×200×115	18	17		
QJY6/12	QJY6/12	1.1	1.5	77	74	68	60	50	37	19	1320×200×115	1085×200×115	21	20		
QJY6/16	QJY6/16	1.5	2	102	98	90	80	67	50	25	1510×200×115	1265×200×115	24	22		
QJY6/21	QJY6/21	2.2	3	134	129	118	105	88	65	33	1810×200×115	1560×200×115	28	26		
-	QJY6/27	3	4	172	165	152	135	113	84	42	M:575×130×140	P:1425×130×140	M:16	P:9		
-	QJY6/36	4	5.5	229	220	203	180	150	112	56	M:620×130×140	P:1810×130×140	M:18.5	P:13.5		

DEEP WELL PUMP

QJ(D)Y8/10

90QJ(D)Y



QJ(D)Y



Technical Data

DN:2" RPM: n=2850 r/min

Model	Power		Flow												Dim. (mm)		G.W. (kg)			
	Single-Phase	Three-Phase	kW	HP	m³/h	0	1.2	2.4	3.6	4.8	6	7.2	8.4	9.6	10.8	12	Single-Phase	Three-Phase	G(s)	G(t)
QJY8/7	QJY8/7	0.75	1	43	41	39	37	34	30	25	19	12	-	-	-	-	820×200×115	820×200×115	18	17
QJY8/9	QJY8/9	1.1	1.5	55	53	50	47	43	38	32	24	15	-	-	-	-	1140×200×115	945×200×115	20	19
QJY8/12	QJY8/12	1.5	2	74	71	67	63	58	51	43	33	20	-	-	-	-	1370×200×115	1140×200×115	23	21
QJY8/17	QJY8/17	2.2	3	104	100	95	89	82	73	61	46	28	-	-	-	-	1625×200×115	1370×200×115	27	25
-	QJY8/22	3	4	135	129	122	115	105	94	79	60	36	-	-	-	-	M:575×125×125	P:1190×125×125	M:16	P:11
-	QJY8/29	4	5.5	178	170	161	151	139	124	104	79	47	-	-	-	-	M:620×125×125	P:1510×125×125	M:18.5	P:12.5
-	QJY8/38	5.5	7.5	234	223	211	198	182	162	136	103	62	-	-	-	-	M:700×125×125	P:1890×125×125	M:21	P:14.5
QJY10/6	QJY10/6	0.75	1	37	36	35	34	33	31	29	26	22	18	13	820×200×115	820×200×115	18	17		
QJY10/8	QJY10/8	1.1	1.5	49	48	47	45	43	41	38	34	30	24	17	1140×200×115	945×200×115	20	19		
QJY10/10	QJY10/10	1.5	2	62	61	59	57	54	51	48	43	37	30	21	1320×200×115	1085×200×115	23	21		
QJY10/14	QJY10/14	2.2	3	86	85	82	79	76	72	67	60	52	42	30	1560×200×115	1320×200×115	27	25		
-	QJY10/18	3	4	111	109	106	102	97	92	86	77	67	54	38	M:575×130×140	P:1140×130×140	M:16	P:11		
-	QJY10/23	4	5.5	142	139	135	130	124	118	109	99	85	69	49	M:620×130×140	P:1370×130×140	M:18.5	P:12		
-	QJY10/31	5.5	7.5	191	188	182	175	168	159	147	133	115	93	66	M:700×130×140	P:2160×130×140	M:21	P:14		
-	QJY10/40	7.5	10	247	242	235	226	216	205	190	172	148	120	85	M:780×130×140	P:2210×130×140	M:25.5	P:16		

4SS(m) 2/3/5/8

DEEP WELL PUMP

4SS(m)



Technical Data DN:1.25" RPM: n=2850 r/min

Model	Power		Flow										Dim. (mm)		G.W. (kg)			
	Single-Phase	Three-Phase	kW	HP	m ³ /h										Single-Phase	Three-Phase	G(s)	G(t)
					0	0.6	1.2	1.8	2.4	3	4	5	6	7				
4SSm2/6	-	-	0.37	0.5	36	33	30	26	20	12	820x200x115	-	10	-				
4SSm2/13	-	-	0.55	0.75	78	72	66	56	44	26	990x200x115	-	12	-				
4SSm2/18	4SS2/18	-	0.75	1	108	100	91	78	61	36	1085x200x115	900x200x115	15	14				
4SSm2/23	4SS2/23	-	1.1	1.5	138	127	117	99	78	46	1265x200x115	990x200x115	18	16				
4SSm2/28	4SS2/28	-	1.5	2	168	155	142	121	95	56	1370x200x115	1140x200x115	22	19				
4SSm2/40	4SS2/40	-	2.2	3	240	222	203	172	135	80	1690x200x115	1425x200x115	29	25				
-	4SS2/55	-	3	4	330	305	279	237	186	110	M:575x130x140	P:1370x130x140	M:16	P:16				

Technical Data 4SS(m)5 DN:1.5" / 4SS(m)8 DN:2" RPM: n=2850 r/min

Model	Power		Flow												Dim. (mm)		G.W. (kg)			
	Single-Phase	Three-Phase	kW	HP	m ³ /h												Single-Phase	Three-Phase	G(s)	G(t)
					0	0.6	1.2	1.8	2.4	3	3.6	4.2	4.8	5.4	6	6.6				
4SSm3/6	-	-	0.37	0.5	37	35	33	31	29	26	21	13	820x200x115	-	10	-				
4SSm3/9	-	-	0.55	0.75	55	52	50	47	44	39	31	19	900x200x115	-	11	-				
4SSm3/12	4SS3/12	-	0.75	1	73	70	67	63	58	51	41	25	990x200x115	740x200x115	12	12				
4SSm3/18	4SS3/18	-	1.1	1.5	109	105	100	94	87	77	62	38	1140x200x115	945x200x115	17	15				
4SSm3/22	4SS3/22	-	1.5	2	134	128	122	115	107	94	76	47	1265x200x115	1030x200x115	20	17				
4SSm3/32	4SS3/32	-	2.2	3	194	186	178	167	155	137	110	68	1560x200x115	1320x200x115	27	23				
-	4SS3/40	-	3	4	243	233	222	209	194	172	138	85	M:575x130x140	P:1085x130x140	M:16	P:11				
-	4SS3/52	-	4	5.5	316	303	289	272	252	223	179	110	M:620x130x140	P:1320x130x140	M:18.5	P:13.5				

Model	Power		Flow												Dim. (mm)		G.W. (kg)			
	Single-Phase	Three-Phase	kW	HP	m ³ /h												Single-Phase	Three-Phase	G(s)	G(t)
					0	0.6	1.2	1.8	2.4	3	3.6	4.2	4.8	5.4	6	6.6				
4SSm5/4	-	-	0.37	0.5	25	24	23	22	21	20	19	18	17	15	12	9	740x200x115	-	10	-
4SSm5/6	-	-	0.55	0.75	37	36	35	33	32	31	29	28	25	22	18	13	820x200x115	-	11	-
4SSm5/8	4SS5/8	-	0.75	1	50	48	46	44	43	41	39	37	34	29	23	17	900x200x115	740x200x115	12	11
4SSm5/12	4SS5/12	-	1.1	1.5	75	72	69	67	64	62	59	55	50	44	35	26	1030x200x115	820x200x115	15	13
4SSm5/17	4SS5/17	-	1.5	2	106	102	98	94	91	87	83	78	71	62	50	36	1190x200x115	945x200x115	19	16
4SSm5/21	4SS5/21	-	2.2	3	131	126	121	116	112	108	103	96	88	76	61	44	1370x200x115	1140x200x115	25	21
-	4SS5/32	-	3	4	200	192	184	178	171	165	157	147	134	116	94	68	M:575x130x140	P:945x130x140	M:16	P:9
-	4SS5/40	-	4	5.5	249	240	230	221	213	205	196	183	167	145	117	86	M:620x130x140	P:1140x130x140	M:18	P:12
-	4SS5/52	-	5.5	7.5	325	312	299	289	278	267	255	239	218	189	152	111	M:700x130x140	P:1420x130x140	M:21	P:15

Model	Power		Flow												Dim. (mm)		G.W. (kg)			
	Single-Phase	Three-Phase	kW	HP	m ³ /h												Single-Phase	Three-Phase	G(s)	G(t)
					0	1.2	2.4	3.6	4.8	6	7.2	8.4	9.6	10.8						
4SSm8/5	4SS8/5	-	0.75	1	29	28	27	25	24	22	21	19	15	10	945x200x115	740x200x115	14	13		
4SSm8/7	4SS8/7	-	1.1	1.5	41	39	37	35	33	31	29	26	21	15	1085x200x115	900x200x115	17	15		
4SSm8/10	4SS8/10	-	1.5	2	59	56	53	50	47	45	41	37	30	21	1265x200x115	1030x200x115	21	18		
4SSm8/12	4SS8/12	-	2.2	3	70	67	64	60	57	54	50	44	36	25	1425x200x115	1140x200x115	27	23		
-	4SS8/18	-	3	4	105	101	96	91	85	80	75	67	55	38	M:575x130x140	P:990x130x140	M:16	P:13		
-	4SS8/24	-	4	5.5	140	134	128	121	113	108	100	89	73	50	M:620x130x140	P:1265x130x140	M:18	P:17		
-	4SS8/32	-	5.5	7.5	187	179	170	161	157	143	133	118	97	67	M:700x130x140	P:1560x130x140	M:21	P:23		

DEEP WELL PUMP

6SS17/30/46/60

6SS



6SG



Technical Data DN: 3" RPM: n=2850 r/min

Model	Power		Flow															Dim. (mm)		G.W. (kg)		
	Three-Phase	kW	HP	m ³ /h															Motor	Pump	G(m)	G(p)
				0	3	6	9	12	15	18	21	24	27	30	33	36	39	42				
6SS17/7	4	5.5	66	64	63	61	57	52	44	35	23	10	-	1190x180x225	43	9						
6SS17/9	5.5	7.5	85	82	81	79	74	67	57	45	30	13	-	1310x180x225	46	12						
6SS17/12	7.5	10	113	109	108	105	98	89	76	60	40	17	-	1490x180x225	49	16						
6SS17/15	9.2	12.5	141	136	135	131	123	111	95	75	50	21	910x180x225	970x180x225	52	20						
6SS17/18	11	15	170	164	162	158	147	134	114	90	60	26	970x180x225	1090x180x225	58	24						
6SS17/24	15	20	226	218	216	210	196	178	152	120	80	34	1060x180x225	1370x180x225	66	32						
6SS17/30	18.5	25	283	273	270	263	245	223	190	150	100	43	1145x180x225	1645x180x225	70	40						

Model	Power		Flow																				Dim. (mm)		G.W. (kg)		
	Three-Phase	kW	HP	m ³ /h																				Motor	Pump	G(m)	G(p)
				0	3	6	9	12	15	18	21	24	27	30	33	36	39	42									
6SS30/4	4	5.5	45	44	43	42	41	39	37	34	33	30	26	22	18	13	7	-	1230x180x225	43	13						
6SS30/5	5.5	7.5	56	55	54	53	51	49	46	43	41	37	32	27	22	16	9	-	1350x180x225	46	16						
6SS30/7	7.5	10	78	77	76	74	72	68	64	60	57	52	45	38	31	22	12	-	1580x180x225	49	22						
6SS30/10	9.2	12.5	111	110	109	106	103	97	91	86	81	74	64	54	44	31	17	910x180x225	1170x180x225	52	32						
6SS30/12	11	15	134	132	130	127	123	117	110	103	98	89	77	65	53	38	21	970x180x225	1350x180x225	58	38						
6SS30/16	15	20	178	176	174	169	165	155	146	137	130	119	103	87	71	50	27	1060x180x225	1710x180x225	66	51						
6SS30/18	18.5	25	201	198	195	190	185	175	165	154	147	134	116	98	80	57	31	1145x180x225	1880x180x225	70	58						

Model	Power		Flow																Dim. (mm)		G.W. (kg)		
	Three-Phase	kW	HP	m ³ /h																Motor	Pump	G(m)	G(p)
				0	6	12	18	24	30	36	42	48	54	60	66	72							
6SS46/3	5.5	7.5	40	39	38	37	35	33	30	27	24	20	16	11	6	-	1230x180x225	46	9				
6SS46/5	7.5	10	66	65	64	62	59	55	50	45	40	33	26	19	10	-	1500x180x225	49	15				
6SS46/6	9.2	12.5	79	78	77	74	71	66	60	54	48	40	31	23	12	910x180x225	930x180x225	52	18				
6SS46/7	11	15	92	91	90	87	83	77	70	63	56	46	36	27	14	970x180x225	1060x180x225	58	21				
6SS46/9	15	20	119	117	115	112	106	99	90	81	72	59	47	34	18	1060x180x225	1270x180x225	66	27				
6SS46/11	18.5	25	145	143	141	136	130	121	110	99	88	73	57	42	22	1145x180x225	1490x180x225	70	33				

Technical Data DN: 4" RPM: n=2850 r/min

Model	Power		Flow																Dim. (mm)		G.W. (kg)		
	Three-Phase	kW	HP	m ³ /h																Motor	Pump	G(m)	G(p)
				0	6	12	18	24	30	36	42	48	54	60	66	72	78						
6SS60/3	5.5	7.5	40	40	39	38	37	34	32	30	28	26											

6SG10/18/30/45/60

DEEP WELL PUMP

Technical Data DN: 3" RPM: n=2850 r/min

Model	Power		Flow									Dim. (mm)		G.W. (kg)	
	kW	HP	m³/h	0	2	4	6	8	10	12	14	16	Motor	Pump	G(m)
6SG10/8	4	5.5	132	115	110	102	92	80	67	51	33	750×180×225	760×180×225	43	18
6SG10/10	5.5	7.5	165	144	138	128	115	100	84	64	41	780×180×225	840×180×225	46	19
6SG10/14	7.5	10	231	201	193	179	161	140	117	89	58	830×180×225	1010×180×225	49	22
6SG10/16	9.2	12.5	264	230	220	204	184	160	134	102	66	910×180×225	1080×180×225	52	23
6SG10/20	11	15	330	288	275	255	230	200	168	128	83	970×180×225	1230×180×225	58	27
6SG10/26	15	20	429	374	358	332	299	260	218	166	107	1060×180×225	1480×180×225	66	31
6SG10/32	18.5	25	528	460	440	408	368	320	268	204	132	1145×180×225	1710×180×225	70	36

Model	Power		Flow											Dim. (mm)		G.W. (kg)	
	kW	HP	m³/h	0	3	6	9	12	15	18	21	24	27	Motor	Pump	G(m)	G(p)
6SG18/6	5.5	7.5	87	84	81	77	72	64	55	45	33	19	-	1365×180×225	45	17	
6SG18/9	7.5	10	131	126	122	116	108	96	83	68	50	29	-	1550×180×225	49	20	
6SG18/11	9.2	12.5	160	154	149	141	132	117	101	83	61	35	910×180×225	970×180×225	54	21.5	
6SG18/13	11	15	189	182	176	167	156	139	119	98	72	41	970×180×225	1060×180×225	59	23	
6SG18/18	15	20	261	252	243	231	216	192	165	135	99	57	1060×180×225	1365×180×225	68	28	
6SG18/22	18.5	25	316	308	297	282	264	235	202	165	121	70	1145×180×225	1550×180×225	76	31	

Model	Power		Flow										Dim. (mm)		G.W. (kg)	
	kW	HP	m³/h	0	5	10	15	20	25	30	35	40	Motor	Pump	G(m)	G(p)
6SG30/5	5.5	7.5	72	68	64	59	53	45	35	23	10	770×180×225	730×180×225	45	17	
6SG30/7	7.5	10	101	95	90	83	74	63	49	32	14	820×180×225	860×180×225	49	19	
6SG30/9	9.2	12.5	130	122	115	106	95	81	63	41	18	910×180×225	960×180×225	54	21.5	
6SG30/11	11	15	158	150	141	130	117	99	77	51	22	970×180×225	1080×180×225	59	23	
6SG30/15	15	20	216	204	192	177	159	135	105	69	30	1060×180×225	1280×180×225	68	28	
6SG30/18	18.5	25	259	245	230	212	191	162	126	83	36	1145×180×225	1460×180×225	76	31	

Model	Power		Flow												Dim. (mm)		G.W. (kg)		
	kW	HP	m³/h	0	6	12	18	24	30	36	42	48	54	60	66	72	Motor	Pump	G(m)
6SG45/5	7.5	10	79	74	69	64	59	54	50	44	38	30	21	820×180×225	730×180×225	49	18		
6SG45/6	9.2	12.5	95	89	83	77	71	65	60	53	46	36	25	910×180×225	860×180×225	52	19		
6SG45/7	11	15	111	104	97	90	83	76	70	62	53	42	29	970×180×225	960×180×225	58	21.5		
6SG45/9	15	20	142	133	124	115	106	97	90	79	68	54	38	1060×180×225	1080×180×225	66	23		
6SG45/11	18.5	25	174	163	152	141	130	119	110	97	84	66	46	1145×180×225	1280×180×225	70	26		

Model	Power		Flow														Dim. (mm)		G.W. (kg)	
	kW	HP	m³/h	0	6	12	18	24	30	36	42	48	54	60	66	72	Motor	Pump	G(m)	G(p)
6SG60/4	7.5	10	62	59	56	53	50	47	43	39	35	30	24	16	9	910×180×225	800×180×225	49	18	
6SG60/5	11	15	78	74	70	66	63	59	54	49	44	38	30	20	11	970×180×225	890×180×225	58	19	
6SG60/7	15	20	109	103	98	93	88	82	75	68	61	53	42	28	16	1060×180×225	1060×180×225	66	21.5	
6SG60/9	18.5	25	140	133	126	119	113	106	97	88	79	68	54	36	20	1145×180×225	1230×180×225	70	25	

DEEP WELL PUMP

QJD/NK(m)



Technical Data DN: 1.5" RPM: n=2850 r/min

Model	Power		Flow					Dim. (mm)	G.W. (kg)
	kW	HP	m³/h	0	1.2	2.4	3.6		
QJD4/6-0.37	0.37	0.5	43	36	31	26	15	710×200×115	15
QJD2/7-0.5	0.5	0.7	45	43	40	33	17	755×200×115	16
QJD4/8-0.55	0.55	1.75	57	48	44	37	22	795×200×115	17
QJD4/10-0.75	0.75	1	71	59	55	45	25	885×200×115	18
QJD4/14-1.1	1.1	1.5	100	87	80	65	34	1095×200×115	21
QJD4/18-1.5	1.5	1.5	129	115	104	81	45	1295×200×115	27

Technical Data DN: 1.25" RPM: n=2850 r/min

Model	Power		Flow											Dim. (mm)		G.W. (kg)	
	kW	HP	m³/h	0	0.6	1.2	1.8	2.4	3	3.6	4.2	4.8	5.4	Single-Phase	Three-Phase	G(s)	G(t)
NK3/3	-	0.55	0.75	33	32	31	30	28	25	21	17	11	5	225×145×585	-	13	-
NK3/4	NK3/4	0.75	1	44	43	42	40	37	34	30	24	18	10	225×145×615	225×145×585	14.5	12.5
NK3/6	NK3/6	1.1	1.5	66	64	62	60	56	51	45	37	28	17	225×145×725	225×145×665	17	16
NK3/8	NK3/8	1.5	2	88	86	83	79	74	68	60	50	38	22	225×145×805	225×145×725	20.5	17

4SK(m)/QG(D)

DEEP WELL PUMP



Technical Data DN: 1" RPM: n=2850 r/min

Model		Power		Flow					Dim.(mm)		G.W. (kg)		
Single-Phase	Three-Phase	kW	HP	m³/h	0	0.6	1.2	1.8	2.4	G(s)	G(t)		
				l/min	0	10	20	30	40				
4SKm100(T)	4SK100(T)	0.75	1	H(m)	52	42	33	21	8	530×190×140	530×190×140	14.5	14
4SKm150(T)	4SK150(T)	1.1	1.5		81	56	46	25	10	820×190×140	600×190×140	17	16
4SKm200(T)	4SK200(T)	1.5	2		96	84	61	45	21	820×190×140	600×190×140	19	17.5

Remark: "T" for cast iron pump casing; no "T" for copper pump casing

Technical Data DN: 1.25" RPM: n=2850 r/min

Model		Power		Outlet (Inch)	Max. Flow (m³/h)	Max. Head (m)	Dim. (mm)	G.W. (kg)	20' Loading Qty (pcs)
Single-Phase	Three-Phase	kW	HP						
QG(Y)D1.2-50-0.37	-	0.37	0.5	1	1.95	70	555×120×210	14	1450
QG(Y)D1.8-50-0.5	-	0.5	0.7	1	2.75	70	555×120×210	14.5	1440
QGD1.2-100-0.55	-	0.55	0.75	1	1.8	120	615×155×205	23	830
QGD1.8-100-0.75	-	0.75	1	1	2.5	120	625×155×205	25	770
QGD2-105-0.8	-	0.8	1.1	1	2.5	120	640×155×205	26	740
-	QG1.8-100-0.75	0.75	1	1	2.5	120	615×155×205	23	830

Summary of Light-type Stainless Steel Multistage Pumps

Product Introduction

Light-type stainless steel multistage centrifugal pumps are non-self priming pumps absorbing the advanced technology from home and abroad. Adopting standard motor and alloy mechanical seal, which make the replacement more convenient. The overflowing part is made from stainless steel, applicable for light-corrosion medium. Relying on the high efficiency, energy saving performance, reliable quality, wide usable range, the products are received the great popularity after they have been launched.

Feature

1. The premium hydraulic model and advanced workmanship greatly improve the pumps' performance and extend the service life.
2. Adopting alloy and fluorin rubber for the mechanical seal, which ensures the pumps' reliable operation and endures high temperature of transmission medium.
3. As the overflowing part of pump is stamped and welded by stainless steel plate, which is suitable for slightly aggressive liquids.
4. Compact design, small in size, light weight, low noise, excellent energy saving performance, easy to maintenance.
5. Inlet and outlet of the pump stand in the same line with the pump base, which can be used directly in the pipelines.
6. Clients can allocate the motor based on their own needs.
7. We provide the intelligent protector to avoid dry running, default phase and over loading of the pump to meet customers' demand.

Application

1. Water supply: water filtering and water delivery in water plants, water delivery for sub-water plants, pressure boost in main pipelines and in high-rise buildings.
2. Industrial pressure boost: flow water system, cleansing system, high-pressure washing system, fire extinguishing system.
3. Industrial liquid delivery: cooling and air-conditioning systems, boiler water supply, condensation system, machine tool, transmission of the acid and alkali mediums.
4. Water treatment(Water purification): ultra-filtration system, reverse osmosis system, distillation system, water treatment system for separator and swimming pool.
5. Irrigation: irrigating of crops, spray irrigation and drop irrigation.

Working Condition

1. Liquid temperature: Normal type 0°C ~ +68°C, hot water type 0°C ~ +120°C
2. Ambient temperature: -15°C ~ +40°C
3. The maximum working pressure: 3.0Mpa/30Bar
4. When the density or viscosity of the transmission medium exceeds that of water, it is necessary to select to a driving motor of high-power.

Motor's Selection

Full-enclosed and ventilating two-pole standard motor

Protection class: IP55

Insulation class: F

Standard voltage /Frequency: Single phase / Three phase; 50Hz/60hz.

BL(T)2/BL(T)4

LIGHT-TYPE STAINLESS STEEL MULTISTAGE PUMPS



BL/BLT

Model	Power kW	Q (M³/h)													Weight				
			1	1.2	1.6	2	2.4	2.8	3.2	3.5	B1	B2	B1+B2	D1	D2	N.W. (kg)	G.W. (kg)	G.W. (kg)	G.W. (kg)
BL2-2/BLT2-2	0.37	H (m)	17	16	15	13	12	11	9	7	260	220	480	145	80	21	27	27	33
BL2-3/BLT2-3	0.37		26	25	23	20	19	17	14	11	278	220	498	145	80	21	28	27	33
BL2-4/BLT2-4	0.55		35	34	32	27	25	24	19	15	296	220	516	145	80	23	29	28	34
BL2-5/BLT2-5	0.55		44	42	39	35	32	29	23	19	314	220	534	145	80	23	29	29	35
BL2-6/BLT2-6	0.75		51	50	48	42	38	34	28	22	340	255	595	175	145	26	32	32	38
BL2-7/BLT2-7	0.75		61	59	55	50	45	39	33	26	358	255	613	175	145	27	33	32	39
BL2-9/BLT2-9	1.1		78	76	71	65	59	52	43	35	394	255	649	175	145	30	36	36	42
BL2-11/BLT2-11	1.1		95	92	86	79	70	61	51	41	430	255	685	175	145	31	37	37	43
BL2-13/BLT2-13	1.5		113	111	103	94	86	75	62	49	479	265	744	195	155	35	41	41	47
BL2-15/BLT2-15	1.5		130	126	119	108	96	86	69	56	515	265	780	195	155	36	42	42	49
BL2-18/BLT2-18	2.2		156	152	143	130	116	103	86	71	569	290	859	195	155	40	46	46	53
BL2-22/BLT2-22	2.2		192	187	175	160	143	125	105	85	641	290	931	195	155	41	48	48	55
BL2-26/BLT2-26	3		227	223	209	190	174	153	125	105	722	325	1047	215	180	47	53	55	61

Model	Power kW	Q (M³/h)													Weight				
			1.5	2	3	4	5	6	7	8	B1	B2	B1+B2	D1	D2	N.W. (kg)	G.W. (kg)	G.W. (kg)	G.W. (kg)
BL4-2/BLT4-2	0.37	H (m)	18	17	16	14	12	9	7	5	278	220	498	145	80	22	28	28	33
BL4-3/BLT4-3	0.55		27	26	25	22	19	17	12	9	305	220	525	145	80	24	29	29	34
BL4-4/BLT4-4	0.75		37	35	33	30	26	23	18	12	340	255	595	175	145	27	32	32	38
BL4-5/BLT4-5	1.1		46	44	42	38	33	30	22	16	367	255	622	175	145	30	35	35	41
BL4-6/BLT4-6	1.1		56	52	50	45	39	35	26	18	394	255	649	175	145	30	35	36	41
BL4-7/BLT4-7	1.5		64	61	59	53	46	41	31	22	434	265	699	195	155	34	39	40	46
BL4-8/BLT4-8	1.5		72	70	68	61	53	48	36	25	461	265	726	195	155	35	40	41	46
BL4-10/BLT4-10	2.2		93	87	84	77	68	59	45	31	515	290	805	195	155	38	44	45	50
BL4-12/BLT4-12	2.2		111	105	101	93	82	72	55	38	569	290	859	195	155	39	45	46	52
BL4-14/BLT4-14	3		132	122	118	108	97	85	64	44	632	325	957	215	180	44	50	52	57
BL4-16/BLT4-16	3		148	140	136	124	111	97	74	51	686	325	1011	215	180	46	51	53	58
BL4-19/BLT4-19	4		178	166	163	147	132	117	88	62	767	340	1107	240	190	52	57	60	65
BL4-22/BLT4-22	4		205	194	186	170	154	132	102	73	848	340	1188	240	190	54	59	62	67

LIGHT-TYPE STAINLESS STEEL MULTISTAGE PUMPS

BL(T)8/16/20

Model	Power kW	Q (M³/h)													Weight				
			5	6	7	8	9	10	11	12	B1	B2	B1+B2	D1	D2	N.W. (kg)	G.W. (kg)	G.W. (kg)	G.W. (kg)
BL8-2/BLT8-2	0.75	H (m)	20	19	18	16	15	14	13	12	375	255	630	175	145	36	44	43	51
BL8-3/BLT8-3	1.1		30	29	28	25	24	23	22	19	405	255	660	175	145	39	47	46	54
BL8-4/BLT8-4	1.5		40	39	38	34	33	31	29	26	440	265	705	195	155	43	51	51	58
BL8-5/BLT8-5	2.2		51	49	47	43	42	40	36	33	470	290	760	195	155	47	54	54	62
BL8-6/BLT8-6	2.2		60	58	56	51	50	47	43	39	500	290	790	195	155	48	56	56	64
BL8-8/BLT8-8	3		81	78	76	70	68	63	58	52	570	325	895	215	180	54	62	63	71
BL8-10/BLT8-10	4		101	97	94	87	85	77	72	65	630	340	970	240	190	61	69	71	79
BL8-11/BLT8-11	4		111	107	103	96	93	85	79	71	660	340	1000	240	190	62	70	72	80
BL8-12/BLT8-12	5.5		122	117	113	105	102	94	87	78	715	390	1105	275	210	80	89	95	103
BL8-14/BLT8-14	5.5		142	136	132	122	119	109	101	91	774	390	1164	275	210	82	91	97	106
BL8-16/BLT8-16	5.5		162	156	151	140	136	126	116	104	834	390	1224	275	210	85	93	100	109
BL8-18/BLT8-18	7.5		182	175	170	157	153	141	130	117	894	390	1284	275	210	91	100	108	116
BL8-20/BLT8-20	7.5		203	195	189	175	170	157	145	130	954	390	1344	275	210	93	102	110	119

Model	Power kW	Q (M³/h)													Weight				
			8	10	12	14	16	18	20	22	B1	B2	B1+B2	D1	D2	N.W. (kg)	G.W. (kg)	G.W. (kg)	G.W. (kg)
BL16-2/BLT16-2	2.2	H (m)	28	27	26	25	22	21	19	17	410	290	700	195	155	45	52	52	59
BL16-3/BLT16-3	3		42	41	39	37	34	32	29	26	465	325	790	215	180	50	57	58	65
BL16-4/BLT16-4	4		56	54	52	50	46	44	38	34	510	340	850	240	190	56	63	65	72
BL16-5/BLT16-5	5.5		69	68	65	62	57	54	48	43	581	390	971	275	210	75	83	88	96
BL16-6/BLT16-6	5.5		83	81	78	75	69	64	58	52	626	390	1016	275	210	76	84	90	98
BL16-7/BLT16-7	7.5		97	95	92	87	80	75	68	61	671	390	1061	275	210	82	90	97	105
BL16-8/BLT16-8	7.5		111	108	105	100	92	86	77	70	716	390	1106	275	210	84	92	99	107
BL16-10/BLT16-10	11		139	136	131	125	115	108	97	87	837	505	1342	330	255	165	173	182	190
BL16-12/BLT16-12	11		167	163	157	150	138	129	116	105	927	505	1432	330	255	168	176	185	194
BL16-14/BLT16-14	15		194	190	184	175	161	151	136	122	1017	505	1522	330	255	181	189	199	207
BL16-16/BLT16-16	15		222	217	210	200	184	173	155	140	1107	505	1612	330	255	184	192	203	211

Model	Power kW	Q (M³/h)													Weight					
			14	16	18	20	22	24	26	28	30	B1	B2	B1+B2	D1	D2	N.W. (kg)	G.W. (kg)	G.W. (kg)	G.W. (kg)
BL20-2/BLT20-2	2.2	H (m)	26	25	24	22	21	20	18	15	13	410	290	700	195	155	45	52	52	59
BL20-3/BLT20-3	4		39	38	37	34	32	30	27	24	465	340	805	240	190	55	62	63	70	
BL20-4/BLT20-4	5.5		52	51	49	45	43	40	37	33	536	390	926	275	210	74	82	85	93	
BL20-5/BLT20-5	5.5		64	62	60	56	54	51	45	40	581	390	971	275	210	75	83	89	97	
BL20-6/BLT20-6	7.5		77	75	73	68	66	61	55	49	626	390	1016	275	210	81	89	95	103	
BL20-7/BLT20-7	7.5		91	89	86	80	75	70	65	58	671	390	1061	275	210	83	90	97	105	
BL20-8/BLT20-8	11		105	102	99	92	86	81	75	67	747	505	1252	330	255	162	170	177	185	
BL20-10/BLT20-10	11		131	128	124	115	111	102	95	85	837	505	1342	330	255	165	173	182	190	
BL20-12/BLT20-12	15		158	154	149	138	130	123	114	102	927	505	1432	330	255	179	186	196	204	
BL20-14/BLT20-14	15		185	180	174	161	152	144	133	119	1017	505	1522	330	255	182	189	200	208	
BL20-17/BLT20-17	18.5		225	219	212	196	185	175	162	145	1152	560	1712	330	255	201	209	222	229	

BL(T)32

LIGHT-TYPE STAINLESS STEEL MULTISTAGE PUMPS



BL/BLT

Model	Power kW	Q (M ³ /h)	H (m)												Weight			
			16	20	24	28	32	36	40	B1	B2	B1+B2	D1	D2	N.W. (kg)		G.W. (kg)	
BL32-2/BLT32-2	4	H (m)	36	34	32	29	27	23	18	634	340	974	240	190	69	72	96	99
BL32-3/BLT32-3	5.5		54	51	48	44	39	35	27	724	390	1114	275	210	88	92	115	119
BL32-4/BLT32-4	7.5		72	68	65	59	53	47	37	794	390	1184	275	210	97	101	124	128
BL32-5/BLT32-5	11		90	86	81	74	67	59	47	894	505	1399	330	255	179	183	212	216
BL32-6/BLT32-6	11		108	102	97	90	81	72	57	964	505	1469	330	255	183	187	216	220
BL32-7/BLT32-7	15		126	120	113	105	95	84	67	1034	505	1539	330	255	197	201	230	234
BL32-8/BLT32-8	15		144	137	129	120	109	97	76	1104	505	1609	330	255	201	205	240	244
BL32-9/BLT32-9	18.5		162	154	146	136	123	109	86	1174	560	1734	330	255	220	224	259	263
BL32-10/BLT32-10	18.5		180	171	162	151	137	121	96	1244	560	1804	330	255	223	228	262	267
BL32-11/BLT32-11	22		198	188	178	166	151	134	105	1314	590	1904	380	280	257	262	300	305
BL32-12/BLT32-12	30		216	205	194	182	165	146	115	1384	590	1974	380	280	267	270	310	313
BL32-13/BLT32-13	30		234	222	211	197	179	158	125	1454	660	2114	420	305	326	331	376	381
BL32-14/BLT32-14	30		252	239	227	212	193	171	135	1524	660	2184	420	305	330	335	380	385
BL32-15/BLT32-15	30		270	256	243	227	206	183	144	1594	660	2254	420	305	334	339	384	389

LIGHT-TYPE STAINLESS STEEL MULTISTAGE PUMPS

BL(T)45/64/90



BL/BLT

Model	Power kW	Q (M ³ /h)	H (m)												Weight			
			25	30	35	40	45	50	55	B1	B2	B1+B2	D1	D2	N.W. (kg)		G.W. (kg)	
BL45-2/BLT45-2	7.5	H (m)	48	46	44	42	39	35	31	715	390	1105	275	210	101	106	129	134
BL45-3/BLT45-3	11		71	69	66	63	58	53	47	825	505	1330	330	255	182	188	215	221
BL45-4/BLT45-4	15		95	92	88	84	77	71	62	905	505	1410	330	255	197	202	230	235
BL45-5/BLT45-5	18.5		118	115	110	105	97	89	78	985	560	1545	330	255	216	221	249	254
BL45-6/BLT45-6	22		142	138	132	125	116	107	93	1065	590	1655	380	280	250	256	285	291
BL45-7/BLT45-7	30		165	161	154	146	135	125	109	1145	660	1805	420	305	316	321	360	365
BL45-8/BLT45-8	30		189	184	176	167	154	143	124	1225	660	1885	420	305	319	324	363	368
BL45-9/BLT45-9	37		212	207	198	188	174	161	140	1305	660	1965	420	305	335	340	379	384
BL45-10/BLT45-10	37		236	230	220	209	193	179	155	1385	660	2045	420	305	340	345	391	396
BL45-11/BLT45-11	45		259	253	242	230	213	197	171	1465	710	2175	470	335	396	401	447	452
BL45-12/BLT45-12	45		283	276	264	251	233	215	186	1545	710	2255	470	335	400	405	451	456

Model	Power kW	Q (M ³ /h)	H (m)												Weight			
			30	40	50	60	64	70	80	B1	B2	B1+B2	D1	D2	N.W. (kg)		G.W. (kg)	
BL64-2/BLT64-2	11	H (m)	53	51	47	43	39	37	30	715	505	1220	330	255	197	204	225	232
BL64-3/BLT64-3	18.5		80	76	71	65	60	56	46	825	560	1385	330	255	225	233	258	266
BL64-4/BLT64-4	22		107	101	94	87	81	75	61	905	590	1495	380	280	260	268	293	301
BL64-5/BLT64-5	30		135	128	119	109	103	94	78	985	660	1645	420	305	326	333	359	366
BL64-6/BLT64-6	37		164	156	144	132	124	114	95	1065	660	1725	420	305	342	350	377	385
BL64-7/BLT64-7	45		193	184	170	155	146	135	112	1145	705	1850	470	335	398	406	442	450
BL64-8/BLT64-8	45		220	211	195	179	168	156	130	1225	705	1930	470	335	403	410	447	454

Model	Power kW	Q (M ³ /h)	H (m)												Weight			
			50	60	70	80	90	100	110	B1	B2	B1+B2	D1	D2	N.W. (kg)		G.W. (kg)	
BL90-2/BLT90-2	15	H (m)	53	50	47	44	39	36	30	771	505	1276	330	255	207	214	240	247
BL90-3/BLT90-3	22		81	77	72	67	61	55	48	863	590	1453	380	280	225	233	260	268
BL90-4/BLT90-4	30		110	105	100	92	83	76	66	955	660	1615	420	305	313	321	348	356
BL90-5/BLT90-5	37		139	131	124	115	104	94	83	1047	660	1707	420	305	338	345	382	389
BL90-6/BLT90-6	45		168	160	150	141	126	117	103	1139	705	1849	470	335	392	400	436	444

BW/BWJ(T)

LIGHT-TYPE STAINLESS STEEL MULTISTAGE PUMPS



BW/BWJ(T)

Model	Power kW	Q (M ³ /h)	H (m)							Weight (kg)	
			1	2	3	4	5	6	7	N.W.	G.W.
BW4-2	0.37	19	18	16	15	13	10	7	10.3	11.5	
BWJ4-2			19	18	16	15	13	10	9.8	11.0	
BWJT4-2			19	18	16	15	13	10	9.8	11.0	
BW4-3	0.55	28	27	24	22	19	15	10	11.8	13.0	
BWJ4-3			28	27	24	22	19	15	10.8	12.0	
BWJT4-3			28	27	24	22	19	15	10.8	12.0	
BW4-4	0.75	38	36	32	30	26	20	14	14.3	15.5	
BWJ4-4			38	36	32	30	26	20	14.3	15.5	
BWJT4-4			38	36	32	30	26	20	14.3	15.5	
BW4-5	1.1	47	45	40	37	32	25	17	17.6	18.8	
BWJ4-5			47	45	40	37	32	25	17.6	18.8	
BWJT4-5			47	45	40	37	32	25	17.6	18.8	
BW4-6	1.1	57	54	48	45	39	30	21	18.3	19.5	
BWJ4-6			57	54	48	45	39	30	18.3	19.5	
BWJT4-6			57	54	48	45	39	30	18.3	19.5	

Model	Power kW	Q (M ³ /h)	H (m)							Weight (kg)	
			0.5	1	1.5	2	2.5	3	3.5	N.W.	G.W.
BW2-2	0.37	19	18	16	14	13	11	9	9.3	10.5	
BWJ2-2			19	18	16	14	13	11	9	9.3	10.5
BWJT2-2			19	18	16	14	13	11	9	9.3	10.5
BW2-3	0.37	28	27	24	21	20	17	14	10.3	11.5	
BWJ2-3			28	27	24	21	20	17	14	9.8	11.0
BWJT2-3			28	27	24	21	20	17	14	9.8	11.0
BW2-4	0.55	36	34	32	27	26	23	17	11.3	12.5	
BWJ2-4			36	34	32	27	26	23	17	10.6	11.8
BWJT2-4			36	34	32	27	26	23	17	10.6	11.8
BW2-5	0.55	46	43	40	35	33	28	22	12.3	13.5	
BWJ2-5			46	43	40	35	33	28	22	11.0	12.2
BWJT2-5			46	43	40	35	33	28	22	11.0	12.2
BW2-6	0.75	54	50	48	42	38	33	25	14.3	15.5	
BWJ2-6			54	50	48	42	38	33	25	15.6	16.8
BWJT2-6			54	50	48	42	38	33	25	15.6	16.8

Model	Power kW	Q (M ³ /h)	H (m)							Weight (kg)		
			8	10	12	14	16	18	20	22	N.W.	G.W.
BW16-2	2.2	25.5	24	23	22	21	19	17	14.5	26.0	27.5	
BWJ16-2			25.5	24	23	22	21	19	17	14.5	25.4	26.9
BWJT16-2			25.5	24	23	22	21	19	17	14.5	25.4	26.9
BW16-3	3	38.5	37	36	34	32	30	27	23	33.3	34.8	
BWJ16-3			38.5	37	36	34	32	30	27	23	29.1	30.6
BWJT16-3			38.5	37	36	34	32	30	27	23	29.1	30.6

Model	Power kW	Q (M ³ /h)	H (m)							Weight (kg)	
			5	6	7	8	9	10	11	N.W.	G.W.
BW8-2	0.75	19	18.5	18	16	15	13	11	13.0	14.5	
BWJ8-2			19	18.5	18	16	15	13	11	17.9	19.4
BWJT8-2			19	18.5	18	16	15	13	11	17.9	19.4
BW8-3	1.1	29	28	27	25	22.5	20	17.5	19.0	20.5	
BWJ8-3			29	28	27	25	22.5	20	17.5	20.0	21.5
BWJT8-3			29	28	27	25	22.5	20	17.5	20.0	21.5
BW8-4	1.5	39	38	36	34	30	26.5	22.5	23.0	24.5	
BWJ8-4			39	38	36	34	30	26.5	22.5	24.5	26.0
BWJT8-4			39	38	36	34	30	26.5	22.5	24.5	26.0
BW8-5	2.2	49	47	45	43	38	33.5	28	23.5	25.0	
BWJ8-5			49	47	45	43	38	33.5	28	27.1	28.6
BWJT8-5			49	47	45	43	38	33.5	28	27.1	28.6

SPARE PARTS

Model	Dimension (cm)
VC-19L	27×27×40
VC-24L	27×27×46

Model	Dimension (cm)
VS-23L	33×33×33
VS-24L	36×36×34

Model	Dimension (cm)
HC-24L	31×28×46
HC-36L	38×36×43
HC-50L	55×36×38

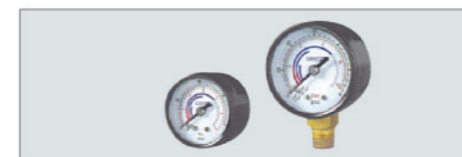
Model	Dimension (cm)
HC-60L	48×46×49
HC-80L	48×46×60
HC-100L	48×46×68

Model	Dimension (cm)
VCF-60L	46×46×65
VCF-80L	46×46×76
VCF-100L	46×46×85

Model	Connection
3-way	1"
4-way	1"
5-way	1"



PS - 02A	PS - 02B	PS - 02C
1.4 - 2.8 bar	1.4 - 2.8 bar	1.4 - 2.8 bar
2.1 - 3.5 bar	2.1 - 3.5 bar	female / male
2.8 - 4.3 bar	2.8 - 4.3 bar	
female / male	3.5 - 5.6 bar	
	4.9 - 7.2 bar	
	female / male	



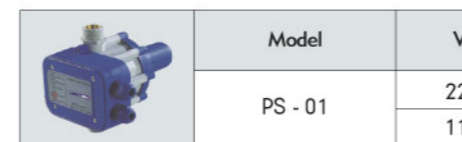
Model	PG - P	PG - SS	PG - S
40mm	PG - 40	PG - SS 40	PG - S 40
50mm	PG - 50	PG - SS 50	PG - S 50

THREE TYPES OF SHELL: (1) PG-P: plastic (2) PG-SS: stainless steel (3) PG-S: steel
THE CONNECTIONS HAVE TWO TYPES: (1)G 1/4" (2)M10×1
FOR 40MM GAUGE, THE SCALE IS 0-10 BAR OR 0-6 BAR

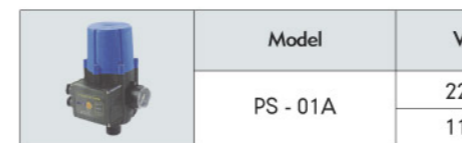
TWO TYPES OF CONNECTIONS: A: BACK CONNECTION B: BOTTOM CONNECTION
FOR 40MM GAUGE, THE SCALE IS 0-6 BAR



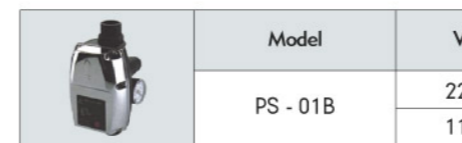
Model	VOLTAGE	CURRENT	AMBIENT TEMPERATURE
FLO-1	220V-240V	8A	0-80°C
FLO-2	220V-240V	8A	0-80°C



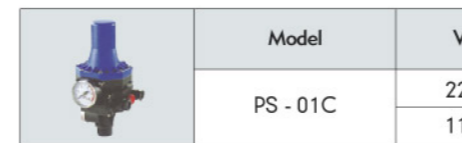
Model	VOLTAGE	FREQUENCY	CURRENT	CONNECTIONS	PROTECTION
PS - 01	220V-240V 110V-115V	50/60Hz	10A	1"×1"	IP 65



Model	VOLTAGE	FREQUENCY	CURRENT	CONNECTIONS	PROTECTION
PS - 01A	220V-240V 110V-115V	50/60Hz	10A	1"×1"	IP 65



Model	VOLTAGE	FREQUENCY	CURRENT	CONNECTIONS	PROTECTION
PS - 01B	220V-240V 110V-115V	50/60Hz	12A	1"×1"	IP 65



Model	VOLTAGE	FREQUENCY	CURRENT	CONNECTIONS	PROTECTION
PS - 01C	220V-240V 110V-115V	50/60Hz	12A	1"×1"	IP 65

